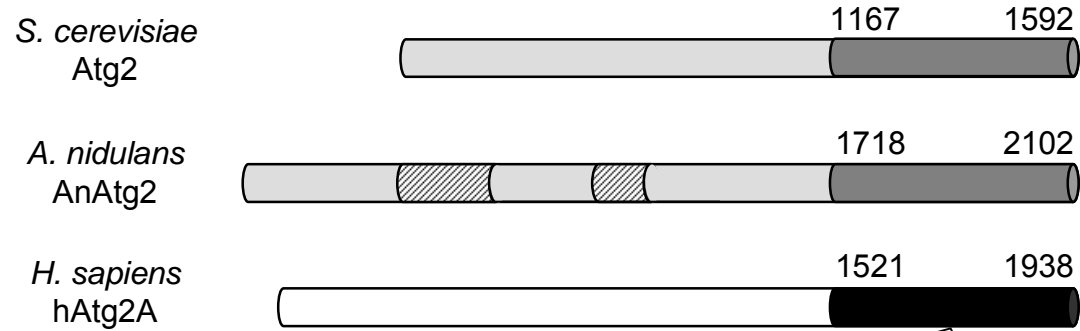


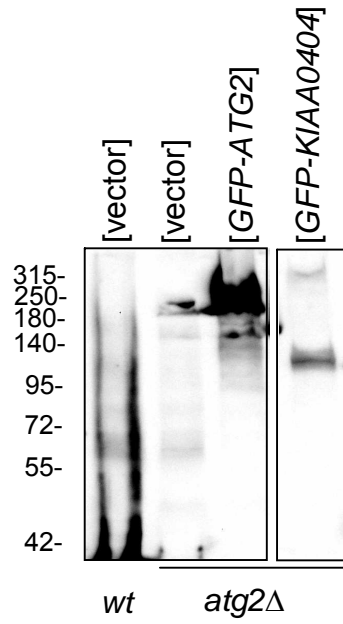
Fig. 1



Atg2	167	-IYEEIIDNVPTSTWPKFVTLKHEPWPH-S-SLFFLDLEFIRPDELQAMELVMLNVAELRLHVDQDILEFLHREL-----	1244
AnAtg2	718	-VKELEIFDHIPTSTWRKFAIYMNEAGEKELG-TSIVLEILTVRVSYLAASELILKATVLPRLRHVDQDALDFMSRFF-----	1796
hAtg2A	521	IVCELEVRDRLASSQINKELYLHTSERMPKRAHSNLTIKALHVAPTTNIGGHECCQTRVSLMPLRLHVDQDALRFLKDFPFFSLVAGINPV	1611
Atg2	245	-----GKDKRFELIDEYPDIVFTQKES-TNSTKLRLDYKPKRV--DYAGLRSGCTSELMN	1298
AnAtg2	797	-----EERDDSTAPSGESQEBEYLORSE-INATPVKLDLKKPKFV--DYAGLRSGCTSELMN	1850
hAtg2A	612	VPGETSAEARPETRAQPSSPLEGGQAEQVETTGSCQEPAGGGHSPSEPDQCPITYFREFRFTSEVPLWLDYHGKAVMDQVGTFAGL---LIG	1698
Atg2	299	FFILD <sup>ES</sup> KIILKSVVL-YGLNGFDE-LNNKIKAITAPDILKKQLPGVLEGLAPVRSFMAI <sup>GG</sup> GVKILVIVLMSEYRQEGFL <sup>SR</sup> SIKKKGN	1386
AnAtg2	851	FFILD <sup>EA</sup> DMVLRHVIV-YGARGFDK-LGQALNDVTPDITKNNQLPGVLAGLAPVRSFV <sup>GG</sup> GVKDLVAVFVREYRKDGRIVRS <sup>OK</sup> GAF	1938
hAtg2A	699	LACINCS <sup>EL</sup> KIKRLCCREGLLGWDKVLGVALNE-PLQDIRKNQLPGILG <sup>EV</sup> GVGMSVVOLFQGFEDLWV <sup>IE</sup> QYRKDGRIV <sup>RG</sup> LORGAA	1787
Atg2	387	VFLKTTGDFVKLGKILTSQTQALLENTEELFGVGSNGRVYDESKFGSADGADSDTAAVLDLDTLFEEDQLVGSKYSRIRDHEPTAVVI	1476
AnAtg2	939	FFKKTISNELVKLGKLAIGTQIVLQGA <sup>EELI</sup> -----SPPAGQA-----ITGZEEDI	1985
hAtg2A	788	SEGSSTASAAL <sup>EL</sup> SNRLVQATQATAETVYDI <sup>ES</sup> P-----A <sup>AV</sup> VSRS-----	1828
Atg2	477	DMSSPGDHN <sup>E</sup> -E <sup>TI</sup> VSLYADQ <sup>EL</sup> DLPTGLK <sup>EAY</sup> SSLEKHMHIAYDAVWRAGQMKDDK <sup>RG</sup> GPSAAAVYVA <sup>RA</sup> APVA <sup>IL</sup> RPLIGATEAVSK	1565
AnAtg2	936	DEDEA <sup>PKK</sup> ISLYADQ <sup>AV</sup> GVVCGTRGGFRGLERD <sup>LII</sup> TRDALLA <sup>VE</sup> GEVQES--GSAKAAAKAVL <sup>KRA</sup> PIV <sup>IL</sup> IRP <sup>AI</sup> GVSKAV <sup>EQ</sup>	2068
hAtg2A	829	-----LQDKRSARRLRGQ <sup>Q</sup> PADLREGVAKAY <sup>IV</sup> TREGILD <sup>TA</sup> Q <sup>TI</sup> CDVASRGHEQ--KGLTCAVGGV <sup>IL</sup> IQ <sup>LP</sup> PTV <sup>VR</sup> PL <sup>IL</sup> LATEA <sup>AS</sup>	1911
Atg2	566	TL <sup>CG</sup> LANQ <sup>DK</sup> THNE <sup>CT</sup> ND----K <sup>YK</sup> SNR---TDS	1592
AnAtg2	069	TL <sup>LG</sup> AGNS <sup>MD</sup> ENRRK <sup>IED</sup> VRLDCAPS <sup>EN</sup> RYCGISS	2102
hAtg2A	912	TL <sup>CG</sup> MRN <sup>Q</sup> IVPDAHK <sup>DHAL</sup> ----K <sup>W</sup> ESDS---AQD	1938

Fig. 2

(a)



(b)

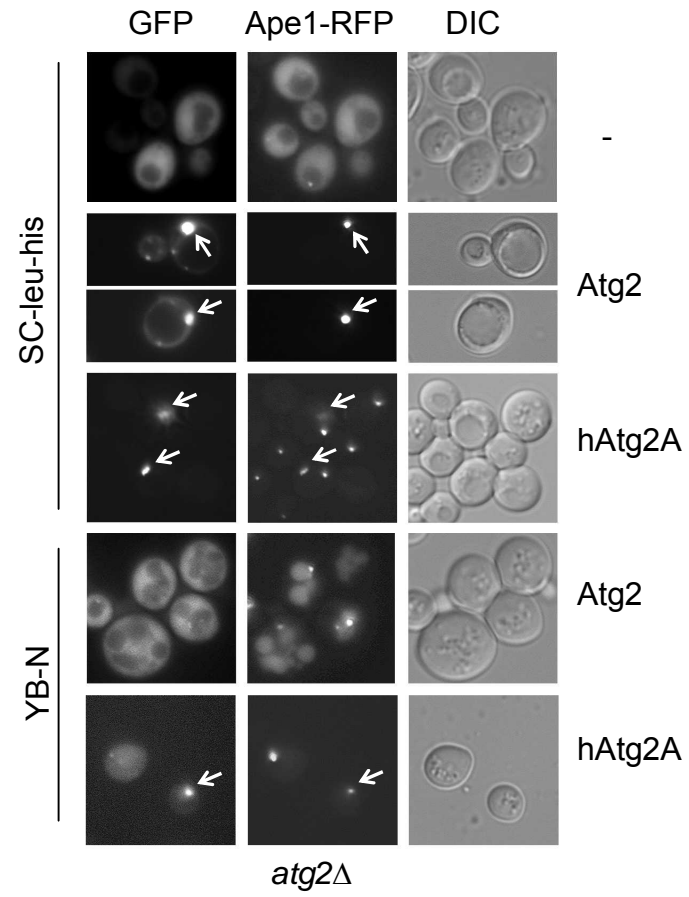


Fig. 3

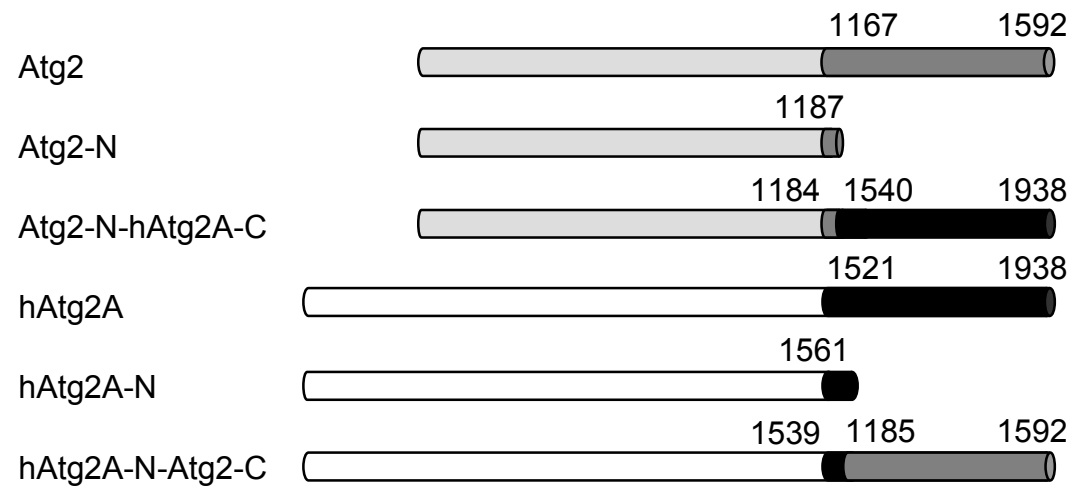


Fig. 4

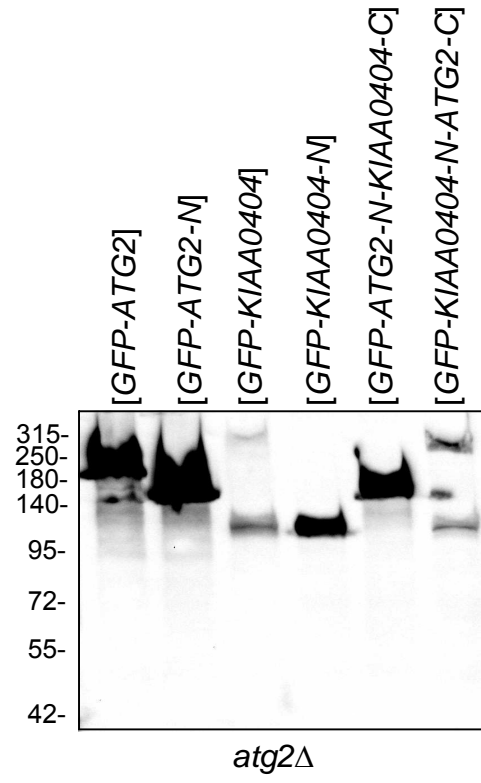


Fig. 5

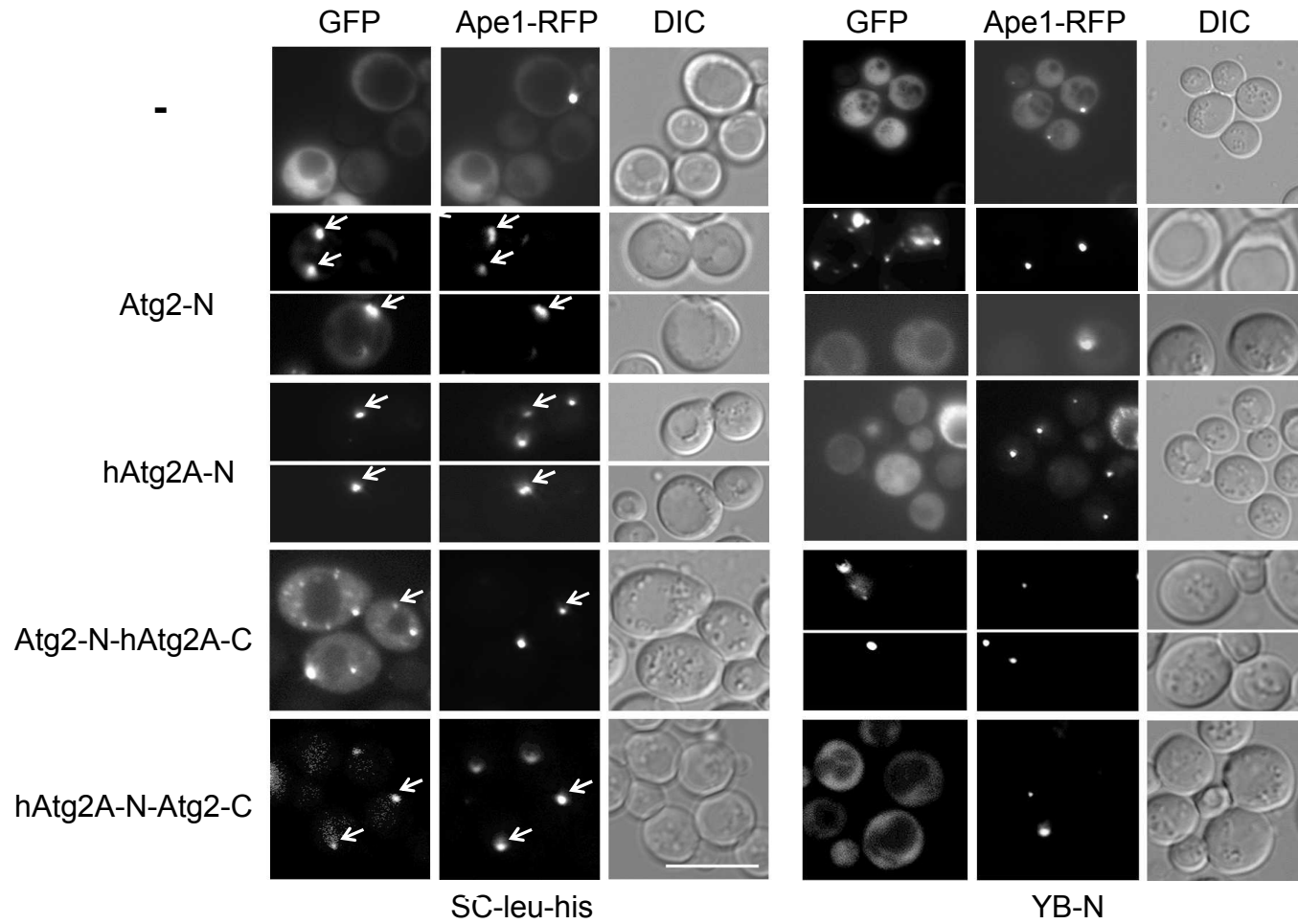


Fig. 6

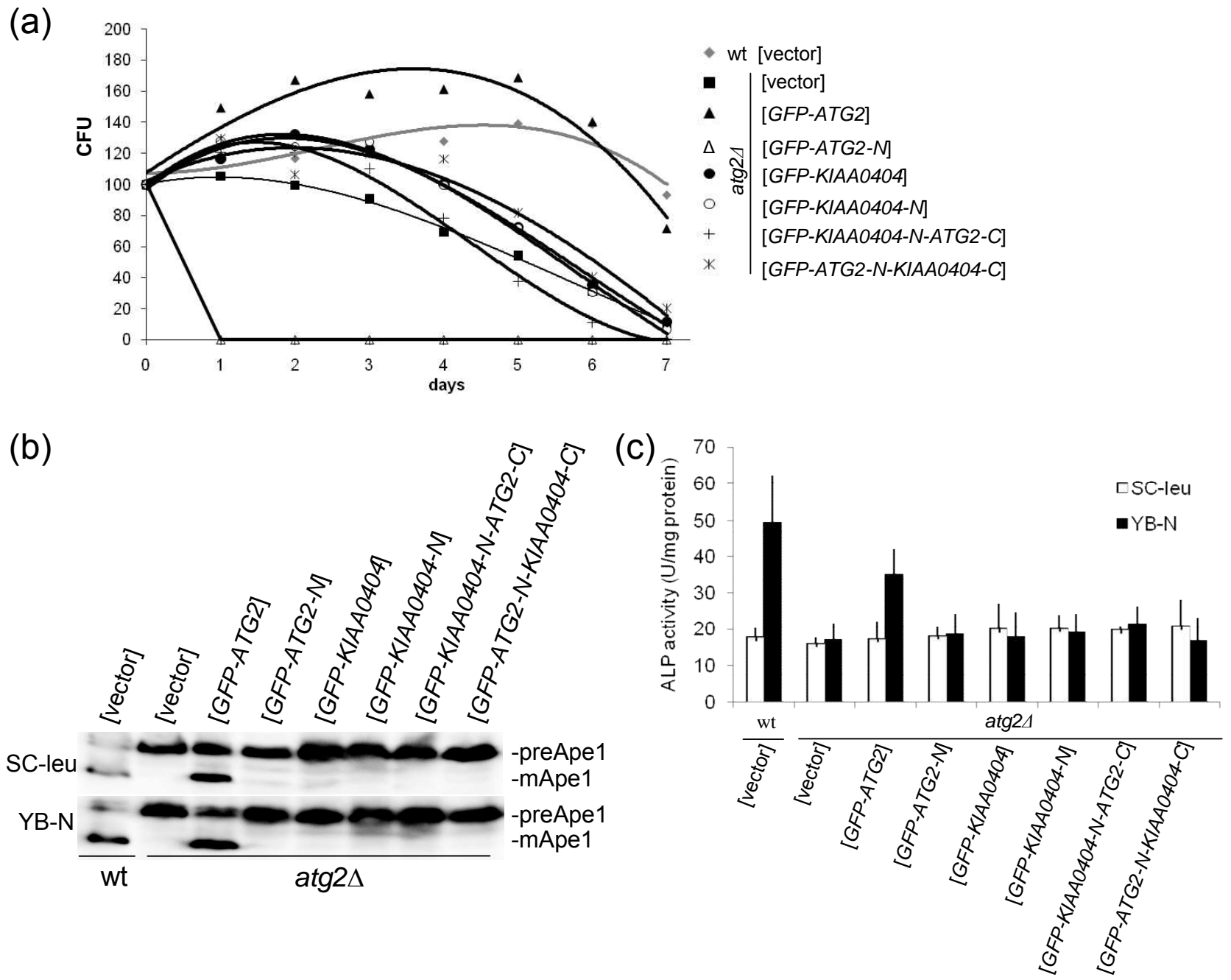


Fig. 7

