



Expression of versican mRNA transcript to predict cardiac remodelling after myocardial infarction

Authors: Aleksandra Chabior, Aleksandra Gąsecka, Michał Marchel, Roksana Gozdowska, Agnieszka Makowska, Karolina Maciak, Monika Góra, Krzysztof J Filipiak, Beata Burzyńska, Grzegorz Opolski

Article type: Original article

Received: March 11, 2021

Accepted: June 16, 2021

Published online: June 17, 2021

This article is available in open access under Creative Common Attribution-Non-Commercial-No Derivatives 4.0 International (CC BY-NC-ND 4.0) license, allowing to download articles and share them with others as long as they credit the authors and the publisher, but without permission to change them in any way or use them commercially.

Expression of versican mRNA transcript to predict cardiac remodelling after myocardial infarction

Aleksandra Chabior^{1*}, Aleksandra Gąsecka^{1*}, Michał Marchel¹, Roksana Gozdowska¹, Agnieszka Makowska¹, Karolina Maciak², Monika Góra², Krzysztof J Filipiak¹, Beata Burzyńska², Grzegorz Opolski¹

¹1st Chair and Department of Cardiology, Medical University of Warsaw, Warszawa, Poland

²Institute of Biochemistry and Biophysics, Polish Academy of Sciences, Warszawa, Poland

*Both authors equally contributed to the study.

Short title: Versican transcript expression to predict cardiac remodelling

Conflict of interest: None declared.

Correspondence to:

Michał Marchel, MD, PhD,

1st Chair and Department of Cardiology, Medical University of Warsaw,

Banacha 1, 02–097 Warszawa, Poland,

phone: +48 22 599 19 58,

e-mail: michal.marchel@wum.edu.pl

WHAT'S NEW?

Cardiac remodeling after acute myocardial infarction is associated with ventricular dysfunction and deteriorates the prognosis. Remodeling consists of genetic and molecular changes in response to cardiac injury. This study tested the concentrations of mRNA transcripts in the peripheral blood of patients after myocardial infarction with and without cardiac remodeling. Our results revealed versican (VCAN) expression was lower in patients who developed left ventricular remodeling (LVR), compared to those who did not. Further studies are needed to assess whether VCAN might be a useful tool to predict cardiac remodeling in clinical practice.

ABSTRACT

Background: Adverse left-ventricular remodelling (LVR) is defined as an increase in end-diastolic left-ventricular volume by 20% 6 months after acute myocardial infarction (AMI). LVR is associated with cardiac dysfunction, therefore deteriorating the prognosis.

Aims: We aimed to compare the concentrations of messenger RNA transcripts in the peripheral blood of patients with and without LVR at 6 months.

Methods: The study included 75 patients with first ST-elevation myocardial infarction (STEMI) treated with percutaneous coronary intervention. Whole blood concentrations of 6 transcripts were determined 24 hours after AMI using droplet digital polymerase chain reaction. The correlations between mRNA transcript expression and left ventricular ejection fraction (LVEF) and N-terminal-pro B type natriuretic peptide (NT-proBNP) concentration were evaluated.

Results: Among 75 patients, 4 were lost to follow-up and 71 were included in the analysis. Seventeen (24%) patients developed LVR at 6 months. Versican (VCAN) mRNA expression was lower in patients who developed LVR, compared to those who did not ($P = 0.02$), and discriminated between these patients (area under the ROC curve 67%; $P = 0.04$). Expression of VCAN transcript <75.3 normalized units predicted LVR with 71% sensitivity and 67% specificity. In a multivariable regression analysis, VCAN expression remained the only independent predictor of LVR (OR 3.475; 95% CI, 1.000–12.075; $P = 0.04$).

Conclusions: Dysregulation of VCAN expression in the acute phase of AMI may contribute to LVR at 6 months. Whether decreased expression of VCAN might be a useful tool to predict LVR in clinical practice remains to be established.

Key words: myocardial infarction, cardiac remodeling, mRNA transcripts, versican

INTRODUCTION

Heart failure (HF) is an important public health challenge, with a global appearance of 1%–2% of the adult population, increasing to 10% among people over 70 years of age [1]. Acute myocardial infarction (AMI) is responsible for over 50% of cases of HF [2]. In patients with AMI, the loss of contractile tissue and left ventricular remodelling (LVR) is anticipated by the structural and functional alterations of the left ventricle, including fibrosis and inflammation [3]. The most common definition of LVR, applied also in this study, is an increase in left-ventricular end-diastolic volume (LVEDV) by 20% 6 months after AMI [4]. LVR affects 25% of patients after AMI and deteriorates the prognosis [5]. Clinical, biochemical, and imaging

parameters increasing the risk of LVR after AMI include the extension and anterior location of AMI, late or unsuccessful revascularization [6], high concentrations of natriuretic peptides and cardiac troponins [7] and enlarged left ventricle (LV) on echocardiography [8]. However, at present there are no reliable biomarkers to predict cardiac remodeling. Due to the role in the development of adverse cardiac remodeling after AMI, novel markers including microRNA and messenger RNA (mRNA) transcripts might be superior to the currently available biomarkers of heart failure and cardiac remodeling, such as N-terminal-pro B type natriuretic peptide (NT-proBNP). Hence, identification of the crucial genes involved in the process of remodeling and associated mRNA transcripts might help to individualize the treatment strategy, improve cardiovascular risk stratification and prediction of outcomes [9].

mRNA is a single-stranded molecule of ribonucleic acid that corresponds to the sequence of a gene and is read in the process of translation (synthesizing a protein) [10]. Previously, we showed that the expression of mRNA transcripts is altered in the peripheral blood of patients after AMI, compared to controls [11]. Using genome-wide gene expression profiling, we selected several transcripts involved in the development of HF after AMI. Here, we hypothesized that the post-AMI expression of mRNA differs in patients with and without LVR. We compared the level of selected mRNA transcripts in patients after AMI with and without LVR and evaluated their predictive value for LVR.

METHODS

Study design

We designed an investigator-initiated, prospective study, conducted at the 1st Chair and Department of Cardiology, Medical University of Warsaw, Poland in collaboration with the Institute of Biochemistry and Biophysics, Polish Academy of Sciences, Warsaw, Poland. The study protocol, designed in compliance with the Declaration of Helsinki, was approved by the Ethics Committee of Medical University of Warsaw (approval number: KB/176/2015). All participants provided written informed consent. The study design is showed in Figure 1A.

Study participants

Study inclusion and exclusion criteria are listed in Table 1. Patients were eligible for enrolment if they (a) were admitted to the hospital due to ST-segment elevation of acute myocardial infarction (STEMI), and (b) underwent percutaneous coronary intervention (PCI) with stent implantation. STEMI was diagnosed based on persistent ST-segment elevation of at least 0.1 mV in at least two contiguous electrocardiography leads or a new left bundle-branch block [12].

Clinical data collection

At baseline, data regarding demographics (age, gender), body mass index, cardiovascular risk factors, routine laboratory parameters. All patients received standard treatment after STEMI according to the guidelines, including double antiplatelet therapy, β -blocker, angiotensin-converting enzyme inhibitor or angiotensin receptor blocker, aldosterone receptor antagonist and protein pump inhibitor [12].

The concentration of NT-proBNP was measured within 24 hours after AMI and at 6-month follow-up in whole blood sample. Transthoracic echocardiography was conducted within 24 hours after AMI and repeated at the follow-up visit. LVR was defined as an increase in LVEDV by 20% at 6 months after AMI, compared to baseline echocardiography.

Messenger RNA transcripts analysis

Whole blood concentrations of 6 transcripts: Ribonuclease 1 (*RNASE1*), Jun dimerization protein 2 (*JDP2*), Cluster of differentiation 163 (*CD163*), Cytochrome P450 family 27 subfamily A member 1 (*CYP27A*), Versican (*VCAN*), Interleukin type 1, receptor 2 (*IL1R2*) were determined within 24 hours after AMI using droplet digital polymerase chain reaction (ddPCR). Selection of specific transcripts was based on the results of our earlier study, which showed that the genes responsible for the expression of these transcript differ between patients with AMI and healthy controls, and between patients who developed post-infarct HF at 6 months, vs those who did not [11]. In the past study, the expression of genes encoding the selected transcripts differed 2- to 3-fold between the groups (post-infarct HF vs no HF: *RNASE1* 2.044-fold change; $P = 0.002$; *JDP2* 1.825-fold change; $P = 0.001$; *CD163*: 1.768-fold change, $P = 0.003$; *IL1R2*: 3.167-fold change; $P = 0.008$; AMI vs controls: *CYP27A* 1.712-fold change; $P = 0.005$; *VCAN* 1.16-fold change; $P = 0.001$). In the past study, we used both peripheral blood mononuclear cells and whole blood as the RNA source. The obtained results showed that the choice of material (whole blood vs peripheral blood mononuclear cells) and analytical method (microarrays vs RT-qPCR) does not affect the obtained results, indicating the robustness of the proposed approach. In the current research, using different cohort of patients and different methodology (ddPCR), we focused on the evaluation of previously selected mRNA transcripts in patients with and without LVR. Briefly, whole blood was collected into PAXgene Blood RNA tubes and total RNA was isolated using the PAXgene Blood RNA kit (Qiagen, Hilden, Germany). Reverse transcription was performed using 400 ng of total RNA and the QuantiTect Reverse Transcription kit (Qiagen). Primer sets were designed using Clone

Manager Professional Suite software, version 6.00 (Sci Ed Software, NC, USA). ddPCR was carried out using QX200™ Droplet Digital™ PCR System (Bio-Rad, CA, USA). The cDNA templates were diluted to a concentration of 4 ng/μl (total RNA equivalent) with nuclease-free water and 2 μl was assayed in a 22-μl reaction volume using EvaGreen (Bio-Rad) and thermal cycling conditions recommended for EvaGreen assays. After amplification, the plates were loaded into the QX200 Droplet Reader and the ddPCR results were analyzed with QuantaSoft software v.1.7.4.0917 and QuantaSoft Analysis Pro software v.1.0.596 (Bio-Rad). The absolute number of target molecules in the ddPCR reaction was determined using Poisson statistical analysis and background-corrected based on the no-template control. Data were expressed as normalized units, according to mRNA level of the reference gene *HPRT1*. In our study, we applied the droplet digital PCR approach to determine the mRNA expression level of studied genes. ddPCR fractionates templates into individual reaction systems, then transitional PCR are run in individual wells and DNA content can be quantitated by direct counting PCR positive percentage among all reactions. The use of absence and presence of signals to indicate target DNA makes a ‘digital’ direct measurement of samples. The digital PCR concept has many potential advantages over classical real-time PCR, including the capability to obtain absolute quantification without external references and robustness to variations.

Endpoints

The primary endpoint was the difference between the expression of mRNA transcripts after AMI in patients with and without LVR at 6 months. The secondary endpoint was the predictive value of mRNA transcripts for LVR at 6 months.

Statistical analysis

About 25% of patients after AMI develop LVR [5]. Since there are currently no data in the literature regarding the differences in mRNA transcript expression of the investigated genes in patients with and without LVR, our sample size calculation was based on the previous study, where we investigated gene expression in patients who did and did not develop post-infarct HR 6 months after STEMI [11]. In this study, the expression of most genes differed 2- to 3-fold between the groups, resulting in the nominal difference of at least 1. Hence, the sample size was calculated based on the following assumptions: (I) significance level for two-sided testing 0.05; (II) test power 0.8; (III) standard deviation ± 1 ; (IV) estimated difference in mean transcript expression between the group with and without LVR 1. Based on these assumptions,

the study should include at least 17 patients who will develop LVR (25% of the group). Assuming 10% of patients lost to follow-up, the required sample size was 75 patients. Statistical analysis was conducted using IBM SPSS Statistics, version 27.0 (IBM). Categorical variables were presented as number and percent and compared using Fischer's exact test. A Shapiro–Wilk test was used to assess normal distribution of continuous variables. Continuous variables were presented as mean (SD) or median with interquartile range. Correlations were analyzed using a Spearman correlation coefficient test. Transcript expression were compared between the groups using an unpaired t-test or Mann-Whitney U test. The diagnostic ability of mRNA transcripts to discriminate between patients with and without LVR and the cut-offs were calculated using a receiver operating characteristic (ROC) curve. For analysis of LVR predictors, univariable logistic regression analysis was used. Next, multivariable analysis was performed, where LVR was used as a dependent variable and predictors which were significant in univariable analysis were used as independent variables. Results were expressed as odds ratio (OR) and 95% confidence interval (CI). Mortality and other adverse events were reported descriptively. A *P* value below 0.05 was considered significant.

RESULTS

The inclusion and exclusion chart are shown in Figure 1B. Between March 2015 and April 2019, 74 patients with first STEMI treated with PCI provided informed written consent and were included in the study.

Clinical data

Among 75 patients, 4 were lost to follow-up and 71 were included in the analysis. Patient characteristics are shown in Table 2. Seventeen (24%) patients did and 54 patients (76%) did not develop LVR at 6 months. Patients with LVR were younger than patients without LVR (mean age, 56.0 [SD, 6.8] years vs 57.9 [SD, 11.4] years, respectively; *P* = 0.039). There were no other clinical differences between patients with and without LVR. Baseline echocardiography parameters and pharmacotherapy were comparable between the groups. All patients received dual antiplatelet therapy, all patients except for one received statin, and more than 88% of patients received a β -blocker and an angiotensin-converting enzyme inhibitor. At 6 months follow-up LVEDV was larger with patients with LVR, compared to those without LVR (*P* = 0.04). The LVEF was comparable in both groups. There were no deaths and only one recurrent hospitalization due to HF during the study in a patient from the LVR group.

VCAN expression is an independent predictor of LVR

Figure 2 shows the mRNA transcripts expression after AMI in patients with and without LVR at 6 months. VCAN expression was lower in patients who developed LVR, compared to those who did not ($P = 0.02$; Figure 2A), and discriminated between these patients (area under the ROC curve, 67%; $P = 0.04$; Figure 2B). The expression of other mRNA transcripts did not differ between the groups. Expression of VCAN transcript <75.3 normalized units predicted LVR with 71% sensitivity and 67% specificity. Statistical estimates for the prediction of LVR by VCAN expression, including the cut-off values determined based on the ROC curve, are showed in Table 3.

To determine the clinical predictors of LVR, we performed univariable logistic regression analysis (Table 4). We found that VCAN expression level below the determined cut-off and age were the only predictors of LVR (OR, 4.050; 95% CI, 1.204–13.619; $P = 0.024$ for VCAN; OR, 0.944; 95% CI, 0.892–0.999; $P = 0.047$ for age). Next, we incorporated VCAN expression and age in the multivariable regression model. VCAN was the only independent predictor of LVR (OR, 3.475; 95% CI, 1.000–12.075; $P = 0.047$; Table 5).

VCAN expression correlates with NT-proBNP concentration

Figures 2C and 2D show the correlations between VCAN expression at 24 hours and NT-proBNP and LVEF at 24 hours and 6 months after AMI. There was a trend towards a positive correlation between VCAN expression and NT-proBNP concentration at 24 hours ($R = 0.23$; $P = 0.07$) and an intermediate, positive correlation at 6 months ($R = 0.33$; $P = 0.01$). There were no correlations between VCAN expression and LVEF.

DISCUSSION

The main finding of our study is that decreased VCAN expression is an independent predictor of LVR after AMI, increasing the odds of LVR 3.5-fold. The second important finding is the positive correlation between VCAN expression and NT-proBNP concentrations in patients after AMI.

VCAN is a protective proteoglycan regulating cell survival and extracellular matrix assembly [11]. Many studies demonstrated the role of VCAN in cardiac remodeling. For example, VCAN was showed to induce myofibroblast differentiation during lung remodeling [14]. In addition, human cardiomyocyte differentiation is accompanied by changes in the expression and accumulation of VCAN [15]. VCAN favors transforming growth factor β -mediated signaling in cardiomyocytes, thereby accelerating healing of the infarcted myocardium [16].

Upregulation of VCAN in the infarcted myocardium mediates chemotaxis and cytokine release in animal model. The transient expression of VCAN by infiltrating monocytes in the infarcted area of the heart suggests the role of VCAN in the inflammatory response [17]. Furthermore, a post-mortem analysis of 20 infarcted cardiac muscles demonstrated the similar localization of the fragmented VCAN and ADAM metallopeptidase with thrombospondin type 1 motif 1 (ADAMTS1) in the necrotic areas. ADAMTS1 is produced by infiltrating macrophages, suggesting that inflammatory processes after AMI lead to VCAN fragmentation [18]. Altogether, down-regulation of VCAN transcript expression in whole blood samples may be a sign of dysfunctional repair mechanisms after AMI, increasing the risk of LVR.

NT-proBNP is an established biomarker of HF and the fragment of the brain natriuretic hormone (BNP) propeptide, which is released in response to the increased atrial and ventricular wall stretch [19]. BNP secretion counteracts the increased cardiac overload, resulting in vasodilation, diuresis, natriuresis and inhibition of cardiac remodeling [20]. The positive correlation between VCAN expression and NT-proBNP observed in our cohort indicated that, similarly to BNP, increased VCAN transcript level might be a protective mechanism in patients after AMI. Concurrently, dysregulated VCAN expression might be a sign of the compensatory mechanisms' failure. However, since we only observed a correlation between both markers, without any causal relationship, we may only speculate about its pathophysiological relevance.

Limitations

The main limitation of our study is the single-centre design and relatively small sample size included in the analysis. Moreover, since our study was not powered for hard clinical end-points including hospitalizations or death due to HF, our results remain hypothesis-generating and required confirmation in future trials. Finally, the wide confidence interval of VCAN expression in the multivariable logistic regression model requires caution when interpreting the results. Altogether, our results should be confirmed in a larger, preferably multi-centre study before implementation in clinical practice.

CONCLUSIONS

In our cohort of patients after STEMI, low VCAN expression was an independent predictor of LVR at 6 months. Whether decreased expression of VCAN might be a useful tool to predict LVR in clinical practice remains to be established.

ACKNOWLEDGEMENTS

We acknowledge Assist. Prof. Michał Michalak (Department of Computer Science and Statistics, Poznan University of Medical Sciences, Poland) for the statistical consultation.

FUNDING

National Centre for Research and Development, Poland (grants no. TANGO1/266456/NCBR/2015)

REFERENCES

1. Lesyuk W, Kriza C, Kolominsky-Rabas P. Cost-of-illness studies in heart failure: a systematic review 2004-2016. *BMC Cardiovasc Disord.* 2018; 18(1): 74, doi: [10.1186/s12872-018-0815-3](https://doi.org/10.1186/s12872-018-0815-3), indexed in Pubmed: [29716540](https://pubmed.ncbi.nlm.nih.gov/29716540/).
2. Fox KF, Cowie MR, Wood DA, et al. Coronary artery disease as the cause of incident heart failure in the population. *Eur Heart J.* 2001; 22(3): 228–236, doi: [10.1053/ehj.2000.2289](https://doi.org/10.1053/ehj.2000.2289), indexed in Pubmed: [11161934](https://pubmed.ncbi.nlm.nih.gov/11161934/).
3. Wu QQ, Xiao Y, Yuan Y, et al. Mechanisms contributing to cardiac remodelling. *Clin Sci (Lond).* 2017; 131(18): 2319–2345, doi: [10.1042/CS20171167](https://doi.org/10.1042/CS20171167), indexed in Pubmed: [28842527](https://pubmed.ncbi.nlm.nih.gov/28842527/).
4. Cokkinos DV, Belogiannas C. Left ventricular remodelling: a problem in search of solutions. *Eur Cardiol.* 2016; 11(1): 29–35, doi: [10.15420/ocr.2015:9:3](https://doi.org/10.15420/ocr.2015:9:3), indexed in Pubmed: [30310445](https://pubmed.ncbi.nlm.nih.gov/30310445/).
5. Flachskampf FA, Schmid M, Rost C, et al. Cardiac imaging after myocardial infarction. *Eur Heart J.* 2011; 32(3): 272–283, doi: [10.1093/eurheartj/ehq446](https://doi.org/10.1093/eurheartj/ehq446), indexed in Pubmed: [21163851](https://pubmed.ncbi.nlm.nih.gov/21163851/).
6. Orn S, Manhenke C, Anand IS, et al. Effect of left ventricular scar size, location, and transmuralinity on left ventricular remodeling with healed myocardial infarction. *Am J Cardiol.* 2007; 99(8): 1109–1114, doi: [10.1016/j.amjcard.2006.11.059](https://doi.org/10.1016/j.amjcard.2006.11.059), indexed in Pubmed: [17437737](https://pubmed.ncbi.nlm.nih.gov/17437737/).
7. Hallén J, Jensen JK, Fagerland MW, et al. Cardiac troponin I for the prediction of functional recovery and left ventricular remodelling following primary percutaneous coronary intervention for ST-elevation myocardial infarction. *Heart.* 2010; 96(23): 1892–1897, doi: [10.1136/hrt.2009.190819](https://doi.org/10.1136/hrt.2009.190819), indexed in Pubmed: [21062778](https://pubmed.ncbi.nlm.nih.gov/21062778/).
8. Husser O, Monmeneu JV, Sanchis J, et al. Cardiovascular magnetic resonance-derived intramyocardial hemorrhage after STEMI: influence on long-term prognosis, adverse

- left ventricular remodeling and relationship with microvascular obstruction. *Int J Cardiol.* 2013; 167(5): 2047–2054, doi: [10.1016/j.ijcard.2012.05.055](https://doi.org/10.1016/j.ijcard.2012.05.055), indexed in Pubmed: [22682700](https://pubmed.ncbi.nlm.nih.gov/22682700/).
9. Berezin AE, Berezin AA. Adverse cardiac remodelling after acute myocardial infarction: old and new biomarkers. *Dis Markers.* 2020; 2020: 1215802, doi: [10.1155/2020/1215802](https://doi.org/10.1155/2020/1215802), indexed in Pubmed: [32626540](https://pubmed.ncbi.nlm.nih.gov/32626540/).
 10. Cao Y, Li R, Li Y, et al. Identification of transcription factor-gene regulatory network in acute myocardial infarction. *Heart Lung Circ.* 2017; 26(4): 343–353, doi: [10.1016/j.hlc.2016.06.1209](https://doi.org/10.1016/j.hlc.2016.06.1209), indexed in Pubmed: [27746059](https://pubmed.ncbi.nlm.nih.gov/27746059/).
 11. Maciejak A, Kiliszek M, Michalak M, et al. Gene expression profiling reveals potential prognostic biomarkers associated with the progression of heart failure. *Genome Med.* 2015; 7(1): 26, doi: [10.1186/s13073-015-0149-z](https://doi.org/10.1186/s13073-015-0149-z), indexed in Pubmed: [25984239](https://pubmed.ncbi.nlm.nih.gov/25984239/).
 12. Ibanez B, James S, Agewall S, et al. ESC Scientific Document Group. 2017 ESC Guidelines for the management of acute myocardial infarction in patients presenting with ST-segment elevation: the task force for the management of acute myocardial infarction in patients presenting with ST-segment elevation of the European Society of Cardiology (ESC). *Eur Heart J.* 2018; 39(2): 119–177, doi: [10.1093/eurheartj/ehx393](https://doi.org/10.1093/eurheartj/ehx393), indexed in Pubmed: [28886621](https://pubmed.ncbi.nlm.nih.gov/28886621/).
 13. Luchner A, Bröckel U, Muscholl M, et al. Gender-specific differences of cardiac remodeling in subjects with left ventricular dysfunction: a population-based study. *Cardiovasc Res.* 2002; 53(3): 720–727, doi: [10.1016/s0008-6363\(01\)00510-7](https://doi.org/10.1016/s0008-6363(01)00510-7), indexed in Pubmed: [11861042](https://pubmed.ncbi.nlm.nih.gov/11861042/).
 14. Carthy JM, Boroomand S, Rahmani M, et al. 130: versican expression induces tissue remodeling. *J Heart Lung Transplant.* 2009; 28(Suppl 2): S111, doi: [10.1016/j.healun.2008.11.808](https://doi.org/10.1016/j.healun.2008.11.808).
 15. Chan CK, Rolle MW, Potter-Perigo S, et al. Differentiation of cardiomyocytes from human embryonic stem cells is accompanied by changes in the extracellular matrix production of versican and hyaluronan. *J Cell Biochem.* 2010; 111(3): 585–596, doi: [10.1002/jcb.22744](https://doi.org/10.1002/jcb.22744), indexed in Pubmed: [20564236](https://pubmed.ncbi.nlm.nih.gov/20564236/).
 16. Islam S, Chuensirikulchai K, Khummuang S, et al. Accumulation of versican facilitates wound healing: Implication of its initial ADAMTS-cleavage site. *Matrix Biol.* 2020; 87: 77–93, doi: [10.1016/j.matbio.2019.10.006](https://doi.org/10.1016/j.matbio.2019.10.006), indexed in Pubmed: [31669737](https://pubmed.ncbi.nlm.nih.gov/31669737/).

17. Toeda K, Nakamura K, Hirohata S, et al. Versican is induced in infiltrating monocytes in myocardial infarction. *Mol Cell Biochem.* 2005; 280(1–2): 47–56, doi: [10.1007/s11010-005-8051-4](https://doi.org/10.1007/s11010-005-8051-4), indexed in Pubmed: [16311904](https://pubmed.ncbi.nlm.nih.gov/16311904/).
18. Pehlivan S, Gurses MS, Ural MN, et al. The role of ADAMTS1 and versican in human myocardial infarction: a postmortem study. *Lab Med.* 2016; 47(3): 205–212, doi: [10.1093/labmed/lmw022](https://doi.org/10.1093/labmed/lmw022), indexed in Pubmed: [27346868](https://pubmed.ncbi.nlm.nih.gov/27346868/).
19. Hall C. NT-ProBNP: the mechanism behind the marker. *J Card Fail.* 2005; 11(Suppl 5): S81–S83, doi: [10.1016/j.cardfail.2005.04.019](https://doi.org/10.1016/j.cardfail.2005.04.019), indexed in Pubmed: [15948107](https://pubmed.ncbi.nlm.nih.gov/15948107/).
20. Lee NS, Daniels LB. Current understanding of the compensatory actions of cardiac natriuretic peptides in cardiac failure: a clinical perspective. *Card Fail Rev.* 2016; 2(1): 14–19, doi: [10.15420/cfr.2016:4:2](https://doi.org/10.15420/cfr.2016:4:2), indexed in Pubmed: [28848655](https://pubmed.ncbi.nlm.nih.gov/28848655/).

Table 1. Eligibility criteria for the study

Inclusion criteria	Exclusion criteria
<ul style="list-style-type: none"> • Age ≥18 years • Informed consent to participate in the study • ST-elevation myocardial infarction • PCI with stent implantation 	<ul style="list-style-type: none"> • Non-ST-elevation acute coronary syndrome • Cardiogenic shock • Severe chronic renal failure (eGFR <30 ml/min/1.73 m²) • Severe liver insufficiency (Child-Pugh class C) • Known pregnancy or breast-feeding

Abbreviations: eGFR, estimated glomerular filtration rate; PCI, percutaneous coronary intervention

Table 2. Main characteristics of patients with and without left ventricular remodelling (LVR) at 6 months after ST-elevation myocardial infarction

	LVR (n = 17)	No LVR (n = 54)	P-value
Characteristic			
Age, years, mean (SD)	56.0 (6.8)	57.9 (11.4)	0.039
Male gender, n (%)	10 (59)	40 (74)	0.229
BMI, mean (SD)	28.9 (4.3)	27.3 (4.3)	0.293
Anterior AMI, n (%)	6 (35)	15 (36)	0.135
Cardiovascular risk factors, n (%)			
Arterial hypertension	8 (47)	29 (69)	0.413
Diabetes mellitus	3 (18)	15 (36)	0.845
Dyslipidemia	10 (59)	30 (71)	0.075
Smoking	6 (35)	26 (62)	0.908
Previous AMI	1 (6)	2 (5)	0.486
Laboratory parameters at baseline			
NT-proBNP, pg/ml, median (IQR)	1055 (473–2076)	607 (269–1872)	0.154
Creatinine, mg/dl, median (IQR)	0.9 (0.2)	0.8 (0.2)	0.578
Hemoglobin, g/dl, mean (SD)	14.2 (0.8)	14.3 (2.1)	0.847
Troponin I, ng/ml, median (IQR)	25.8 (6.2–41.9)	14.6 (3.6–54.2)	0.630
Laboratory parameters at 6 months			
NT-proBNP, pg/ml, median (IQR)	96 (82–356)	228 (113–347)	0.207
Echocardiography at baseline, mean (SD)			
LVEDV, ml	102.8 (27.5)	118.6 (45.6)	0.343
LVESV, ml	53.5 (18.7)	64.7 (29.7)	0.312
LVEF, %	48.9 (7.8)	46.2 (8.9)	0.823
Echocardiography at 6 months, mean (SD)			
LVEDV, ml	152.7 (46.9)	115.5 (31.7)	0.043
LVESV, ml	65.3 (28.1)	56.3 (25.3)	0.350
LVEF, %	57.8 (8.5)	52.5 (8.8)	0.393
Pharmacotherapy at discharge, n (%)			
Aspirin	17 (100)	54 (100)	1.00

<i>P2Y12</i> inhibitor	17 (100)	54 (100)	1.00
Statin	17 (100)	53 (98)	0.57
β-blocker	15 (88)	52 (96)	0.21
ACE-inhibitor or ARB	16 (94)	53 (98)	0.38
Aldosterone receptor antagonist	2 (1)	5 (10)	0.76

Abbreviations: ACE, angiotensin-converting enzyme; ARB, angiotensin-receptor blockers; BMI, body mass index — weight in kilograms divided by square of the height in meters; IQR, interquartile range; LVEDV, left ventricle end-diastolic volume; LVEF, left ventricle ejection fraction; LVESV, left ventricle end-systolic volume; NT-proBNP, N-terminal pro-B-type natriuretic peptide; SD, standard deviation

Table 3. Statistical estimates for prediction of LVR by VCAN transcript expression

	AUC (95% CI)	P value	Cut-off	Sensitivit y	Specificit y
VCAN	0.67 (0.53–0.81)	0.04	<75.3 NU	71%	67%

Abbreviations: AUC, area under the curve; CI, confidence interval; NU, normalized units; VCAN, versican

Table 4. Results of univariable logistic regression analysis for prediction of LVR including pre-operative VCAN expression transcript above the cut-off value and clinical risk factors

Variable	OR	95% CI		P-value
		Lower	Upper	
VCAN <75.3 NU AUC	4.050	1.204	13.619	0.024
Age	0.944	0.892	0.999	0.047
Gender (female)	3.250	0.648	16.301	0.152
BMI	1.082	0.935	1.252	0.292
Anterior AMI	2.417	0.648	9.015	0.189
Arterial hypertension	1.417	0.367	5.473	0.613
Diabetes mellitus	1.033	0.233	4.578	0.966
Dyslipidemia	2.885	0.556	14.957	0.207
Smoking	0.952	0.263	3.448	0.941
Previous AMI	1.773	0.147	21.423	0.652
NT-proBNP	1.000	0.999	1.000	0.316
Creatinine	1.000	0.999	1.001	0.763
Hemoglobin	1.048	0.657	1.672	0.843
Troponin I	0.996	0.982	1.010	0.571
LVEDV	0.992	0.972	1.012	0.421
LVESV	0.988	0.958	1.018	0.437
LVEF	0.997	0.936	1.063	0.935
Aspirin	1.000	0.999	1.000	0.678
P2Y12 inhibitor	3.621	0.726	18.066	0.117
Statin	1.000	0.999	1.000	0.520
β-blocker	722.712	0.001	2347.72	0.999
ACE-inhibitor or ARB	686.576	0.001	6852.21	0.999
Aldosterone receptor antagonist	0.182	0.022	1.533	0.117

Abbreviations: ACE, angiotensin-converting enzyme; ARB, angiotensin-receptor blockers; AUC, area under the curve; BMI, body mass index — weight in kilograms divided by square of the height in meters; CI, confidence interval; LVEDV, left ventricle end-diastolic volume; LVEF, left ventricle ejection fraction; LVESV, left ventricle end-systolic volume; NT-proBNP, N-terminal pro-B-type natriuretic peptide; OR, odds ratio; NU, normalized units; VCAN, versican

Table 5. Multivariable logistic regression model for prediction of LVR including significant predictors of LVR in univariable analysis (pre-operative VCAN expression transcript above the cut-off value and age)

Variable	OR	95% CI		P-value
		Lower	Upper	
VCAN <75.3 NU AUC	3.475	1.000	12.075	0.047
Age	0.951	0.897	1.009	0.099

Abbreviations: AUC, area under the curve; CI, confidence interval; NU, normalized units; OR, odds ratio, VCAN, versican

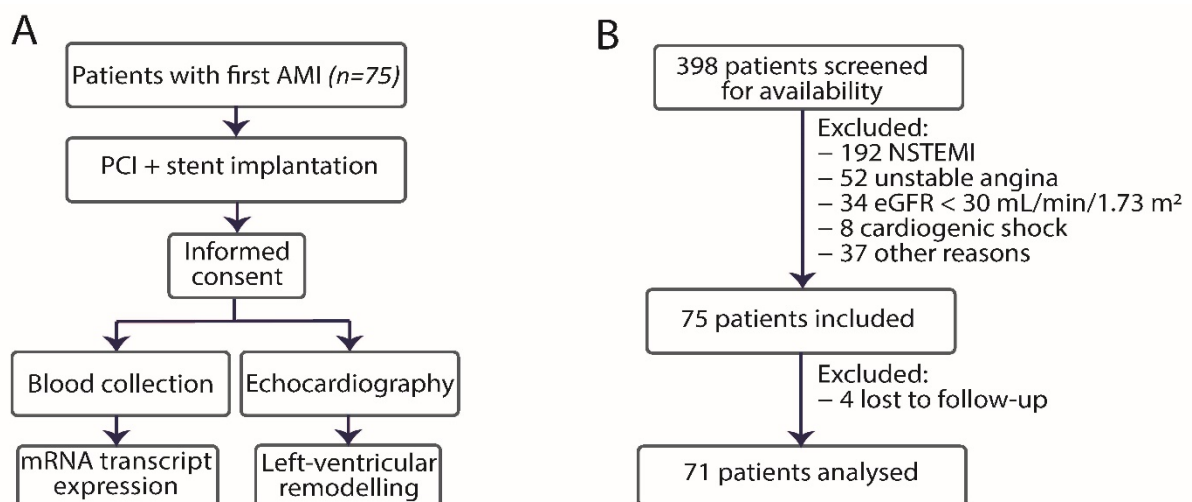


Figure 1. Study design and flow chart

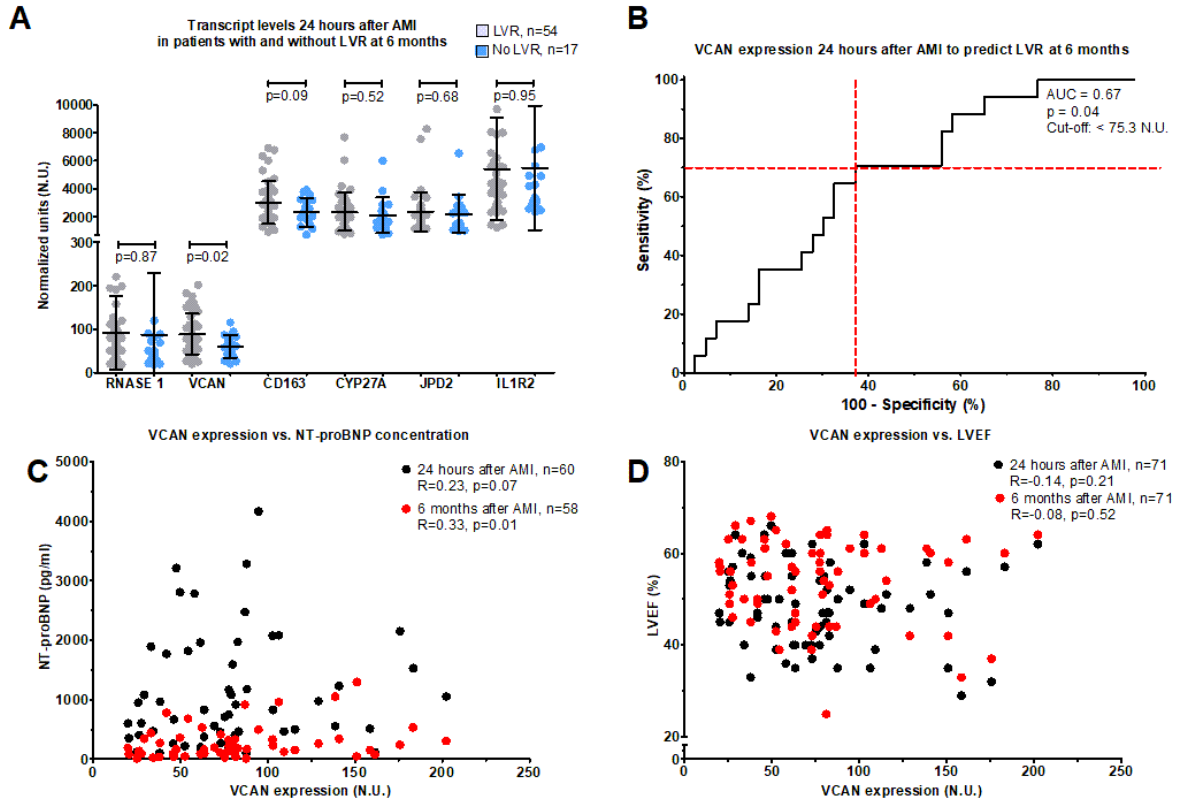


Figure 2. **A.** Messenger RNA transcript expression levels measured at baseline after acute myocardial infarction (AMI) in patients with or without left ventricle remodeling (LVR) at 6 months follow-up. Data are expressed as median and interquartile range and compared using Mann-Whitney U test. **B.** Receiver operating characteristic curve showing versican (VCAN) expression after AMI to predict LVR. **C.** Correlation between VCAN expression measured at baseline and NTproBNP concentration measured at baseline and 6 months after AMI, analyzed using Spearman correlation coefficient test. **D.** Correlation between VCAN expression measured at baseline and LVEF at baseline and 6 months after AMI, analyzed using Spearman correlation coefficient test