

This article was downloaded by: [Agnieszka Sirko]

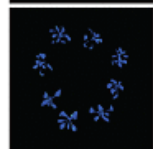
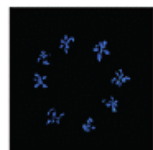
On: 12 November 2014, At: 08:00

Publisher: Taylor & Francis

Informa Ltd Registered in England and Wales Registered Number: 1072954 Registered office: Mortimer House, 37-41 Mortimer Street, London W1T 3JH, UK

**PLANT** signaling & behavior

Volume 8 Issue 11 November 2014



**Editor in Chief**  
Francisco Salazar  
Department of Plant and Molecular Biology  
University of Chile

**Section Editors**  
Jorge Aguirre  
Department of Plant and Molecular Biology  
University of Chile

**Key Reviews**  
Prof. Dr. Agnieszka Sirko  
Department of Plant and Molecular Biology  
University of Chile

**Editorial Board**  
Prof. Dr. Agnieszka Sirko  
Department of Plant and Molecular Biology  
University of Chile



## Plant Signaling & Behavior

Publication details, including instructions for authors and subscription information:

<http://www.tandfonline.com/loi/kpsb20>

### Intronic T-DNA insertion in Arabidopsis NBR1 conditionally affects wild-type transcript level

Milagros Collados Rodríguez<sup>a</sup>, Anna Wawrzyńska<sup>a</sup> & Agnieszka Sirko<sup>a</sup>

<sup>a</sup> Institute of Biochemistry and Biophysics, Polish Academy of Sciences, Pawinskiego 5A, 02-106 Warsaw, Poland, Emails: ; ;

Accepted author version posted online: 31 Oct 2014.

To cite this article: Milagros Collados Rodríguez, Anna Wawrzyńska & Agnieszka Sirko (2014): Intronic T-DNA insertion in Arabidopsis NBR1 conditionally affects wild-type transcript level, Plant Signaling & Behavior, DOI: [10.4161/15592324.2014.975659](https://doi.org/10.4161/15592324.2014.975659)

To link to this article: <http://dx.doi.org/10.4161/15592324.2014.975659>

Disclaimer: This is a version of an unedited manuscript that has been accepted for publication. As a service to authors and researchers we are providing this version of the accepted manuscript (AM). Copyediting, typesetting, and review of the resulting proof will be undertaken on this manuscript before final publication of the Version of Record (VoR). During production and pre-press, errors may be discovered which could affect the content, and all legal disclaimers that apply to the journal relate to this version also.

PLEASE SCROLL DOWN FOR ARTICLE

Taylor & Francis makes every effort to ensure the accuracy of all the information (the "Content") contained in the publications on our platform. However, Taylor & Francis, our agents, and our licensors make no representations or warranties whatsoever as to the accuracy, completeness, or suitability for any purpose of the Content. Any opinions and views expressed in this publication are the opinions and views of the authors, and are not the views of or endorsed by Taylor & Francis. The accuracy of the Content should not be relied upon and should be independently verified with primary sources of information. Taylor and Francis shall not be liable for any losses, actions, claims, proceedings, demands, costs, expenses, damages, and other liabilities whatsoever or howsoever caused arising directly or indirectly in connection with, in relation to or arising out of the use of the Content.

This article may be used for research, teaching, and private study purposes. Any substantial or systematic reproduction, redistribution, reselling, loan, sub-licensing, systematic supply, or distribution in any form to anyone is expressly forbidden. Terms & Conditions of access and use can be found at <http://www.tandfonline.com/page/terms-and-conditions>

# **Intronic T-DNA insertion in *Arabidopsis NBR1* conditionally affects wild-type transcript level**

Milagros Collados Rodríguez, Anna Wawrzyńska, Agnieszka Sirko\*

Institute of Biochemistry and Biophysics, Polish Academy of Sciences, Pawinskiego 5A, 02-106 Warsaw, Poland

Emails: [mila.collados@ibb.waw.pl](mailto:mila.collados@ibb.waw.pl); [blaszczyk@ibb.waw.pl](mailto:blaszczyk@ibb.waw.pl); [asirko@ibb.waw.pl](mailto:asirko@ibb.waw.pl)

\* Corresponding author

e-mail: [asirko@ibb.waw.pl](mailto:asirko@ibb.waw.pl)

**Running title:** T-DNA insertional mutant in AtNBR1

**Keywords:** Arabidopsis, T-DNA mutant, transcription, NBR1, At4g24690, SALK\_135513, intronic insertion

**Abbreviations:** NBR1 - Neighbour of BRCA1; WT – wild-type; T-DNA – transferred DNA; KO – knock-out; MV – methyl viologen; sqRT-PCR – semiquantitative RT-PCR; qRT-PCR –quantitative RT-PCR.

**Competing interests:** No competing interests declared.

**Financial acknowledgements:** This work was supported by the Marie Curie Initial Training Network, project No 264296, BIONUT.

## Abstract

The SALK\_135513 line of *Arabidopsis thaliana* is annotated by GenBank to have the T-DNA insertion in the fourth exon of *NBR1* (At4g24690). Careful molecular analyses of the homozygous plants of SALK\_135513 line indicated the place of T-DNA insertion in the fourth intron. Unexpectedly, two kinds of *NBR1* transcripts, the wild-type and the mutated, resulting from alternative splicing events, were detected in those plants. Our findings explain the problems encountered by us with phenotypic evaluation of this line and emphasize the necessity for independent verification of the exact insertion site followed by careful expression studies when working with *Arabidopsis* T-DNA insertional mutants.

## Introduction

Transferred DNA (T-DNA) from *Agrobacterium tumefaciens* Ti plasmids is nowadays popular tool for plant genetic manipulation.<sup>1, 2</sup> T-DNA insertional mutagenesis helps in identification of the gene responsible for an observed phenotype and allows to establish its function. Currently, there are several collections of the *Arabidopsis* T-DNA mutants freely distributed to all researchers.<sup>3</sup>

The protein product of the *NBR1* (At4g24690) gene was recently identified as a hybrid orthologue of the mammalian NBR1 (Neighbour of BRCA1) and p62 proteins which are selective autophagy cargo receptors participating in recycling of cellular components.<sup>4</sup> The selective autophagy process involving NBR1-like proteins in plants is now very intensively studied.<sup>4-6</sup> The phenotypic and genetic studies of the effective knock-out (KO) mutants could be very helpful in understanding the *in vivo* functions of

NBR1. Although there are several insertion mutant lines available for *NBR1*, there are reports that they might be ineffective in knocking out the transcription.<sup>4</sup> Only recently, a mutant line SALK\_135513 was characterized as showing clear phenotypic differences in several stress-generating conditions.<sup>5</sup> The aim of our study was to further characterize the NBR1 function based on the genetic and phenotypic observations of the SALK\_135513 mutant. However, the precise mapping of the insertion site led us to conclude that T-DNA locates in the fourth intron instead of previously annotated fourth exon of *NBR1* (GenBank Acc. No BZ384415.1). Additionally, we proved that the wild-type (WT) mRNA of *NBR1* is present in SALK\_135513 making the mutant ineffective in aborting the transcription. This explains why in our laboratory the mutant plants exhibited no obvious phenotypic and developmental defects under normal and unfavorable growth conditions.

### Materials and Methods

The *Arabidopsis thaliana* SALK\_135513 T-DNA insertion line was obtained from NASC. The plants (accession Columbia (WT) and SALK\_135513 (homozygous)) were grown in soil. Total DNA and RNA were isolated from rosette leaves of 4- and 8-week-old plants, respectively. Genomic DNA was extracted as described by Edwards et al.<sup>7</sup> Total RNA (5 µg) isolated independently from two leaves per plant with TRI Reagent (Molecular Research Centre, Inc.) was used for cDNA synthesis as described earlier.<sup>8, 9</sup> The list of oligonucleotides used as primers is shown in Supplementary Table 1. The PCR conditions were adjusted depending on the primers and are shown in Supplementary Table 2.

For methyl viologen (MV) treatment, heat, drought and salt stresses the plants were 5 weeks old grown in soil in short-day conditions (8 h light-22°C/16 h dark-19°C; in greenhouse or growth chamber with a light intensity of  $157.67 \pm 19.78 \mu\text{E m}^{-2} \text{s}^{-1}$ ). For the oxidative stress the plants were sprayed with 20  $\mu\text{M}$  MV and kept well watered for two days under constant light in a growth chamber ( $181.33 \pm 13.32 \mu\text{E m}^{-2} \text{s}^{-1}$  light intensity). The heat stress was conducted by placing the well watered plants for 24 h under four Dual 2700K/6500K Red/Blue spectrum lamps generating a temperature of 45 °C; the pictures were taken after 3 days of recovery. The dark stress was performed by keeping the plants in a complete darkness for 6 days followed by 4 days of recovery. For drought stress plants received no water for 4 days and for salt stress they were kept on 0.6 M NaCl for 4 days and next the pictures were taken.

## Results and Discussion

Four PCR primers applied in three PCR combinations were used for initial genotyping of the SALK\_135513 mutant. The details of PCR1, 2 and 3, each performed with genomic DNA of the WT and three individual SALK\_135513 plants, are listed in Supplementary Table 2, while the overall scheme and results of the analysis is shown in Fig.1. The products of the expected size with the primers flanking the T-DNA insertion (PCR1 and PCR3) were obtained only in the case of the WT genomic DNA indicating homozygosity of the SALK\_135513 plants. The small amounts of the shorter than expected PCR product in PCR1 in the case of SALK\_135513 result from an unspecific

reaction as proved by sequencing (data not shown). Furthermore, presence of the PCR2 product in SALK\_135513 confirms that the analyzed plants indeed contain T-DNA insert within *NBR1*.

All PCR fragments were sequenced and aligned to the corresponding region of the WT genomic DNA allowing the precise insertion site of the T-DNA (GenBank Acc. No KC820135) (Supplementary Fig. 1 and Supplementary Fig. 2). Surprisingly, the insertion mapped to the fourth intron but not to the fourth exon of *NBR1* as annotated (GenBank Acc. No BZ384415.1). This incorrect annotation might be a result of the rapid sequencing method used for indexing the SALK mutant collection.

The next step was to investigate if the T-DNA insert affects *NBR1* transcription level. It has been reported that only 0.7% of the T-DNA intronic insertions do not have any effect on transcript level.<sup>10</sup> The semi-quantitative RT-PCR (sqRT-PCR) was carried out using three combinations of the *NBR1*-specific oligonucleotides with cDNA prepared from WT and SALK\_135513 plants. The expected *NBR1*-specific PCR products for two kinds of the transcripts (WT and truncated) are schematically marked in Fig.2A. Expression of the *PetC* (photosynthetic electron transfer c; At4g03280) served as a quantitative reference.<sup>11</sup> Reactions were performed separately and pooled before loading on to a gel to facilitate analysis. The PCR products of the size expected for the cDNA corresponding to the WT transcript (1522, 1155 and 145 bp) were obtained for all plants indicating the presence of the WT transcript in the homozygous SALK\_135513 line

(Fig. 2B). Sequencing of those PCR fragments (GenBank Acc No KC848420) confirmed their 100% identity with relevant fragments of WT *NBR1* mRNA. The subsequent quantitative RT-PCR (qRT-PCR) using slightly different primers combinations (Fig.3A) than the combination used for sqRT-PCR indicated the similar amounts of transcripts corresponding to the region upstream to the mapped insertion and much reduced amount of transcripts corresponding to the region downstream the T-DNA insert in the SALK\_135513 line (Fig.3B).

Further work aimed to check if the chimeric transcripts containing truncated *NBR1* and fragments of T-DNA insert can be detected in SALK\_135513 plants. The results of this analysis are shown in Fig.2C and the expected product of sqRT-PCR (1176 bp) is schematically marked in Fig.2A. The expression of tubulin  $\alpha 3$  served as a quantitative reference. The results of the sqRT-PCR confirmed the presence of the chimeric transcripts in SALK\_135513. Sequencing of the 1176 bp product indicated that splicing occurred within the T-DNA (removing its 97-nt fragment). The remaining T-DNA stayed inserted into the fourth intron of the *NBR1* transcript (GenBank Acc. No KC848419), however the exact length of such truncated mRNA is not known because its sequence downstream of the T-DNA insertion point has not been verified.

We have demonstrated that mixture of the WT and the truncated transcripts exists in homozygous SALK\_135513. Such cases have been reported before in T-DNA insertion mutants.<sup>10</sup> The mechanisms of splicing in plants are not completely understood but from

preliminary studies<sup>12</sup> and comparison to other organisms it is possible to distinguish some common features which may serve as recognition sites for the plant splicing machinery. There are several features required for splicing within the intron: a donor site (5' end of the intron), a branch site (near the 3' end of the intron) and an acceptor site (3' end of the intron) composed of specific nucleotides. The alignment of the acceptor sites of the introns present in At4g24690 indicated a limited similarity and allowed the distinguishing of two groups. The putative site of the splicing in the T-DNA insert resembles the acceptor sites in introns 2, 3 and 6 of *NBR1* (Table 1). These sequences coincide with the less restrictive definition criteria of the acceptor site which identified AG as acceptor sites for plants.<sup>13</sup>

Zhou et al.<sup>5</sup> have reported that SALK\_135513 mutant has increased sensitivity to various abiotic stresses. However, in our laboratory, no visible differences between the WT and SALK\_135513 plants were noticed in any of the conditions of applied oxidative, heat, drought, salt or dark stresses (Supplementary Fig .3). We followed the expression of both types of *NBR1* transcripts (WT and mutated) in SALK\_135513 plants challenged by salt and drought stresses in comparison to the control conditions. Interestingly, the ratio between both types of *NBR1* mRNA appeared to be differentially affected by stresses (Fig.4). In plants challenged with the salt stress there was more of the mutated *NBR1* produced while in drought stress the splicing machinery favored the WT *NBR1* assembly.



The observations of the phenotypes of SALK\_135513 described in this work disagree with phenotypes reported by Zhou et al.<sup>5</sup> These discrepancies might be attributed to differences in growing conditions that might affect the splicing machinery. Similarly to long intronic non-coding RNA causing epigenetic changes in the level of gene expression, T-DNA insertion may affect the proper splicing.<sup>14</sup>

Recently, it was demonstrated for the intronic T-DNA insertion mutant *opr3* that it shows clear KO phenotype after wounding while upon fungal infection there is no effect on the normal transcription of *OPR3* probably due to the splicing of the T-DNA-containing intron.<sup>15</sup> Ulker et al. 2008<sup>16</sup> reported that introns containing T-DNA inserts are less efficiently spliced than WT introns in the various mutant lines. These findings corroborates our data showing the influence of different conditions on the WT copy of the transcript in the SALK\_135512 (Fig.4).

## Conclusions

Our results emphasize the need for detailed molecular analyses of Arabidopsis T-DNA insertion lines. This characterization should include the precise mapping of the T-DNA insert to confirm annotated position within the gene of interest as well as expression analysis with gene-specific primers to ensure the absence of WT mRNA copies in T-DNA mutant line. An extra care has to be taken when working with intronic T-DNA insertions because in some of them the expression may undergo environmental changes complicating interpretations of the mutant phenotype.

## **Acknowledgements**

This work was supported by the Marie Curie Initial Training Network, project No 264296, BIONUT.

Accepted Manuscript

## References

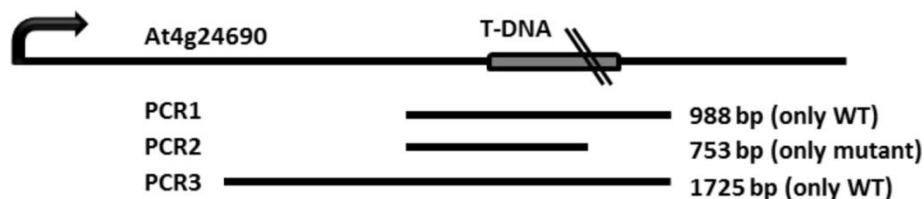
1. Galbiati M, Moreno MA, Nadzan G, Zourelidou M, Dellaporta SL. Large-scale T-DNA mutagenesis in Arabidopsis for functional genomic analysis. *Funct Integr Genomics* 2000; 1:25-34.
2. Krysan PJ, Young JC, Sussman MR. T-DNA as an insertional mutagen in Arabidopsis. *Plant Cell* 1999; 11:2283-90.
3. Alonso JM, Ecker JR. Moving forward in reverse: genetic technologies to enable genome-wide phenomic screens in Arabidopsis. *Nature reviews Genetics* 2006; 7:524-36.
4. Svenning S, Lamark T, Krause K, Johansen T. Plant NBR1 is a selective autophagy substrate and a functional hybrid of the mammalian autophagic adapters NBR1 and p62/SQSTM1. *Autophagy* 2011; 7:993-1010.
5. Zhou J, Wang J, Cheng Y, Chi YJ, Fan B, Yu JQ, Chen Z. NBR1-mediated selective autophagy targets insoluble ubiquitinated protein aggregates in plant stress responses. *PLoS genetics* 2013; 9:e1003196.
6. Zientara-Rytter K, Lukomska J, Moniuszko G, Gwozdecki R, Surowiecki P, Lewandowska M, Liszewska F, Wawrzynska A, Sirko A. Identification and functional analysis of Joka2, a tobacco member of the family of selective autophagy cargo receptors. *Autophagy* 2011; 7:1145-58.

7. Edwards K, Johnstone C, Thompson C. A simple and rapid method for the preparation of plant genomic DNA for PCR analysis. *Nucleic Acids Res* 1991; 19:1349.
8. Chomczynski P, Sacchi N. Single-step method of RNA isolation by acid guanidinium thiocyanate-phenol-chloroform extraction. *Anal Biochem* 1987; 162:156-9.
9. Lewandowska M, Wawrzynska A, Moniuszko G, Lukomska J, Zientara K, Piecho M, Hodurek P, Zhukov I, Liszewska F, Nikiforova V, et al. A Contribution to Identification of Novel Regulators of Plant Response to Sulfur Deficiency: Characteristics of a Tobacco Gene UP9C, Its Protein Product and the Effects of UP9C Silencing. *Mol Plant* 2010; 3:347-60.
10. Wang YH. How effective is T-DNA insertional mutagenesis in Arabidopsis? *J Biochem Tech* 2008; 1:11-20.
11. Kihara T, Zhao CR, Kobayashi Y, Takita E, Kawazu T, Koyama H. Simple identification of transgenic Arabidopsis plants carrying a single copy of the integrated gene. *Biosci Biotechnol Biochem* 2006; 70:1780-3.
12. Barbazuk WB, Fu Y, McGinnis KM. Genome-wide analyses of alternative splicing in plants: opportunities and challenges. *Genome research* 2008; 18:1381-92.

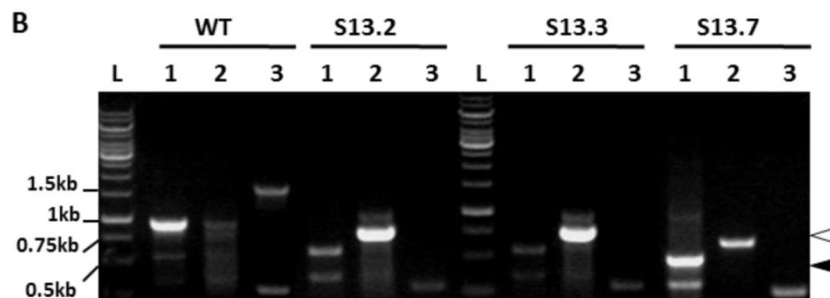
13. Reddy AS. Alternative splicing of pre-messenger RNAs in plants in the genomic era. *Annu Rev Plant Biol* 2007; 58:267-94.
14. Gao Y, Zhao Y. Epigenetic suppression of T-DNA insertion mutants in *Arabidopsis*. *Mol Plant* 2013; 6:539-45.
15. Chehab EW, Kim S, Savchenko T, Kliebenstein D, Dehesh K, Braam J. Intronic T-DNA insertion renders *Arabidopsis* *opr3* a conditional jasmonic acid-producing mutant. *Plant Physiol* 2011; 156:770-8.
16. Ulker B, Peiter E, Dixon DP, Moffat C, Capper R, Bouche N, Edwards R, Sanders D, Knight H, Knight MR. Getting the most out of publicly available T-DNA insertion lines. *Plant J* 2008; 56:665-77.

## Figure Legends

A



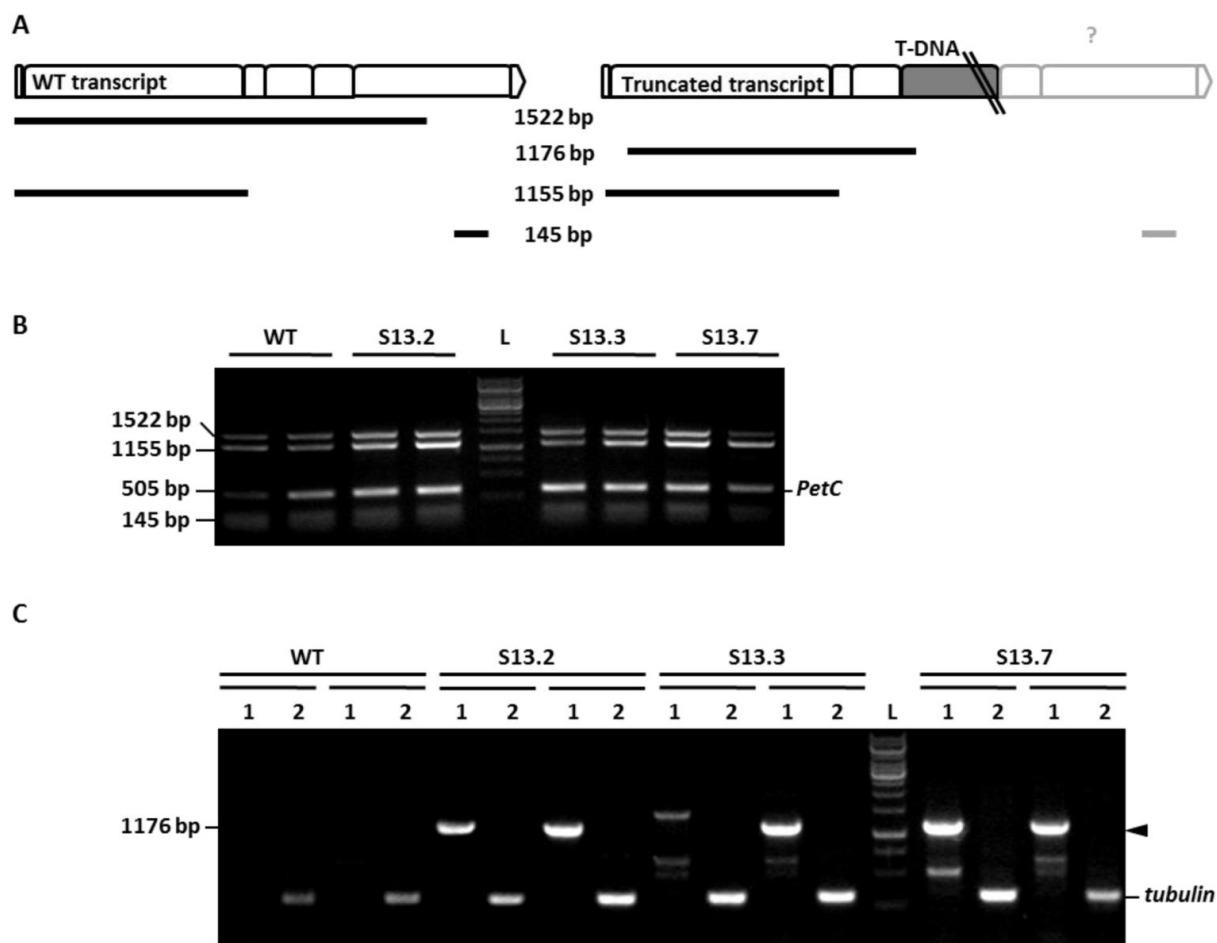
B



**Figure 1.** Mapping of the T-DNA insert in SALK\_135513.

A) Scheme of the expected PCR products and their localization in the At4g24690 chromosomal region.

B) PCR results with the pairs of S13LP/S13RP (lanes 1; PCR1), LBb1.3/S13RP (lanes 2; PCR2) and S13LP/S05LP (lanes 3; PCR3) oligonucleotides as primers and genomic DNA isolated from the WT or three independent SALK\_135513 plants (S13.2, S13.3 and S13.7) as templates. Bands marked with a black arrowhead (S13.7 plant, PCR1) and a white arrowhead (three SALK\_135513 plants, PCR2), were sequenced. Notice, that a non-specific band of 0.6 kb (PCR1) was amplified also in WT; L denotes 1kb DNA Ladder GeneRuler (Fermentas, cat No SMO311), with sizes of the selected bands indicated.

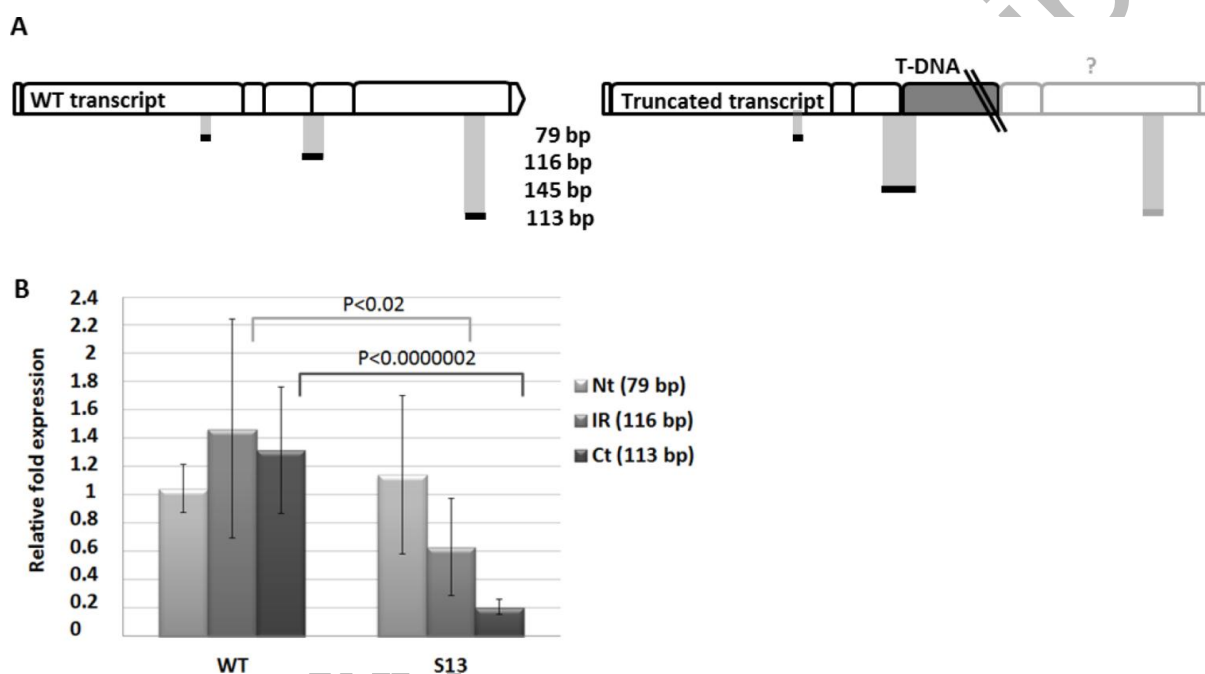


**Figure 2.** Two variants of *NBR1* transcripts in SALK\_135513.

A) Scheme of the expected PCR fragments and their localization on the expected mRNAs. The exons of *NBR1* (represented as boxes) and the T-DNA position is marked. The size of the expected PCR products is indicated.

B) Results of semiquantitative RT-PCR indicating the presence of the WT transcript in the homozygous SALK\_135513 plants. The PCR was performed in duplicate using two pools of independently prepared cDNA for the indicated plants (WT or the mutant). The expected sizes of the PCR products in WT are (1522, 1155 and 145 bp).

C) Results of semiquantitative RT-PCR showing the presence of mutated mRNA in SALK\_135513, spliced within the T-DNA insert. The oligonucleotide pairs LBb/S05LP (lanes labeled as 1) and TUBF/TUBR (lanes labelled as 2) were used as primers. The PCR products marked with black arrowheads were cut off from the gel and sequenced. L, 1kb DNA Ladder GeneRuler (Fermentas, cat No SMO311).



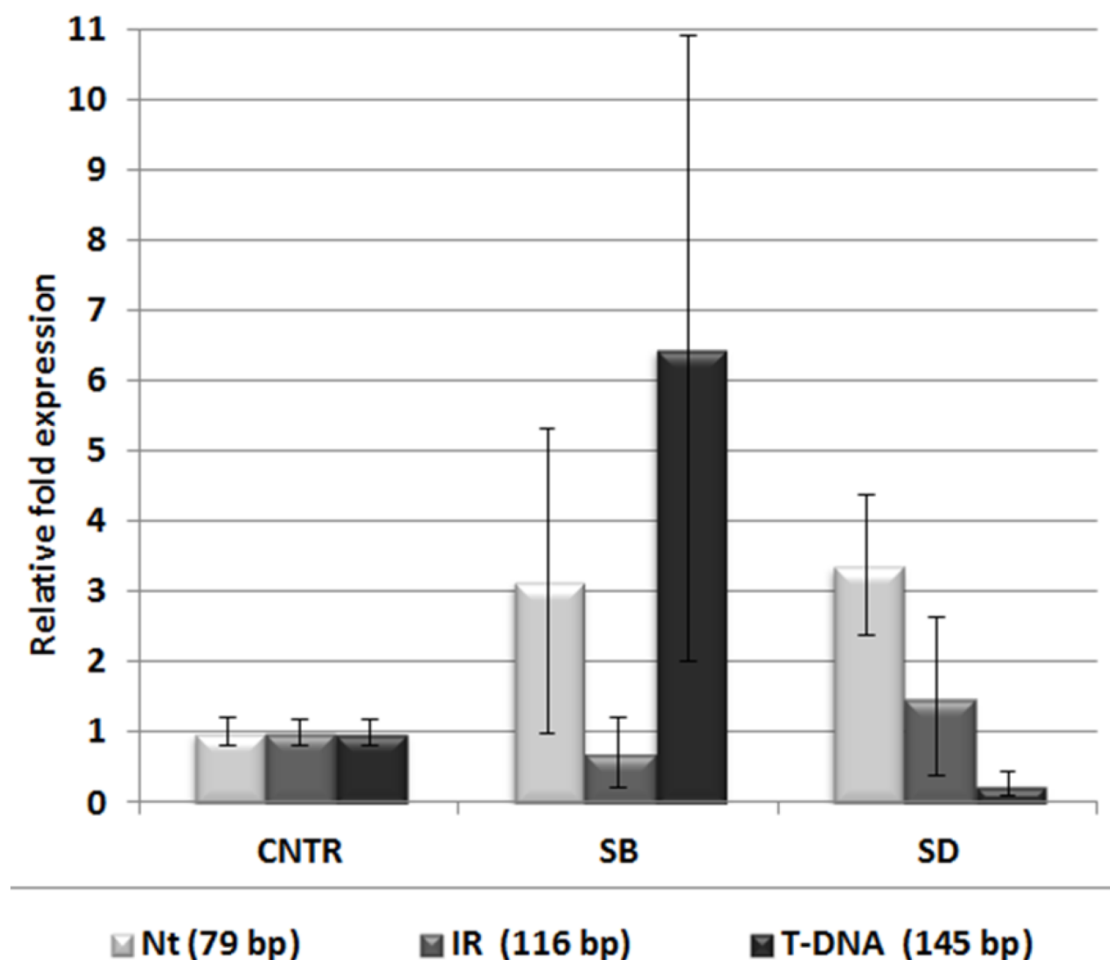
**Figure 3.** Quantitative RT-PCR for detection of three different parts of *NBR1* transcript (Nt, N-terminal region of the cDNA, 79 bp; IR, intermediate region of the cDNA, 116 bp, Ct, C-terminal region of the cDNA, 113 bp) in non-stressed WT (Col-0) and SALK\_135513 plants.

A) Schematic location of the expected PCR fragments on the WT and mutated mRNA of *NBR1* (boxes represent individual exons);

B) Results of qRT-PCR in WT (Col-0) and SALK\_135513 (S13) plants indicating the similar level of Nt but reduced amounts of IR and Ct in SALK\_135513 as compared to



WT. Data bars represent the mean ( $\pm$ SD) of two biological repeats performed in technical triplicate for WT and four biological repeats performed in technical triplicate for SALK\_135513.



**Figure 4.** Stress-dependent changes of the relative abundance of two variants of *NBR1* transcript in SALK\_135513 plants. Localization of the PCR product specific for SALK\_135513 WT (Nt, 145 bp; IR, 116 and T-DNA, 145 bp) transcripts is as in Fig.3A. The amounts of the indicated PCR products in SALK\_135513 plants treated by salt stress (SB) and drought stress (SD) is shown in relation to the amount of the same

products in SALK\_135513 plants grown in the control conditions (CNTR). Data bars represent the mean ( $\pm$ SD) of two biological repeats performed in technical duplicate.

**Table 1.** Alignment of acceptor sites of the introns in *NBR1* gene and a sequence of T-DNA insertion functioning as an acceptor site of an intron.

3'ss	-	-	-	-	-	-	-	-	-	-	-	-	-	-	-	-	-	+	+	+	
	1	1	1	1	1	1	1	1	1	9	8	7	6	5	4	3	2	1	1	2	3
	8	7	6	5	4	3	2	1	0												
Intro n 1	T	T	G	T	T	T	G	T	G	A	T	T	A	T	G	T	A	G	G	T	G
Intro n 2	C	T	T	G	T	G	A	A	T	A	T	T	G	T	G	C	A	G	T	A	A
Intro n 3	C	T	T	T	T	T	T	T	T	T	T	G	G	T	A	T	A	G	T	T	T
Intro n 4	T	C	T	C	T	T	T	A	C	A	C	A	T	G	G	C	A	G	A	T	T
Intro n 5	T	T	C	T	T	T	T	T	G	C	A	T	G	G	T	T	A	G	G	T	T
Intro n 6	A	A	T	A	T	T	G	T	G	A	T	T	T	T	G	C	A	G	G	G	C
T- DN A	G	G	T	T	T	T	T	C	T	T	T	T	C	A	C	C	A	G	T	G	A