

**Human RECQL5 beta stimulates Flap Endonuclease 1**

Journal:	<i>Nucleic Acids Research</i>
Manuscript ID:	NAR-02063-D-2009.R2
Manuscript Type:	1 Standard Manuscript - US Editorial Office
Key Words:	DNA Repair, RecQ helicases, flap endonuclease



Review

## Human RECQL5 $\beta$ stimulates Flap Endonuclease 1

Elżbieta Speina<sup>1,2</sup>, Lale Dawut<sup>1</sup>, Mohammad Hedayati<sup>1</sup>, ZhengMing Wang<sup>1</sup>, Alfred May<sup>1</sup>,  
Sybille Schwendener<sup>3</sup>, Pavel Janscak<sup>3</sup>, Deborah L. Croteau<sup>1</sup>, and Vilhelm A. Bohr<sup>1\*</sup>

<sup>1</sup>National Institute on Aging, National Institutes of Health, 251 Bayview Blvd, Baltimore,  
MD 21224, USA; <sup>2</sup>Institute of Biochemistry and Biophysics, Polish Academy of Sciences,  
Pawińskiego 5a, 02-106 Warszawa; Poland and <sup>3</sup>Institute of Molecular Cancer Research of  
the University of Zurich, Switzerland

\*Corresponding author

Laboratory of Molecular Gerontology, Baltimore Research Center, 251 Bayview Blvd, Ste  
100, Rm 6B133, Baltimore, MD, 21224 Tel: 410 558 8162 Fax: 410 558 8157 E-mail:

[vbohr@nih.gov](mailto:vbohr@nih.gov)

Running title: Biochemical characterization of RECQL5 $\beta$

Word count:

**ABSTRACT**

Human RECQL5 is a member of the RecQ helicase family which is implicated in genome maintenance. Five human members of the family have been identified; three of them, BLM, WRN and RECQL4 are associated with elevated cancer risk. RECQL1 and RECQL5 have not been linked to any human disorder yet; cells devoid of *RECQL1* and *RECQL5* display increased chromosomal instability. Here, we report the physical and functional interaction of the large isomer of RECQL5, RECQL5 $\beta$ , with the human flap endonuclease 1, FEN1, which plays a critical role in DNA replication, recombination and repair. RECQL5 $\beta$  dramatically stimulates the rate of FEN1 cleavage of flap DNA substrates. Moreover, we show that RECQL5 $\beta$  and FEN1 interact physically and co-localize in the nucleus in response to DNA damage. Our findings, together with the previous literature on WRN, BLM and RECQL4's stimulation of FEN1, suggests that the ability of RecQ helicases to stimulate FEN1 may be a general feature of this class of enzymes. This could indicate a common role for the RecQ helicases in the processing of oxidative DNA damage.

## INTRODUCTION

Helicases play important roles in the maintenance of genomic stability. They act in many DNA metabolic processes, including DNA replication, recombination, base excision repair and transcription (1-4). DNA helicases of the RecQ family have a broad amino acid sequence homology to the *Escherichia coli* RecQ helicase. These 3'-5' DNA helicases unwind a wide variety of potentially recombinogenic DNA structures, including four-way junctions, D-loops and G-quadruplex DNA.

Humans have five RecQ homologs: RECQL/RECQL1, BLM/RECQL2, WRN/RECQL3, RECQL4 and RECQL5 (5). Defective RecQ helicase function causes genomic instability, which is manifested as an increase in the frequency of inappropriate recombination events. Mutations in *BLM*, *WRN* and *RECQL4* give rise to the hereditary disorders Bloom, Werner and Rothmund-Thomson syndromes, respectively (6-9). These diseases are associated with chromosomal instability, premature aging and cancer predisposition. The RECQL1 and RECQL5 proteins have not been genetically linked to any diseases yet; however, mutations in *RECQL1* and *RECQL5* might predispose individuals to cancer. In contrast to the other human RecQ helicases, RECQL5 exists in at least three different isoforms (10). These isoforms are generated by alternative mRNA splicing from the *RECQL5* gene that contains 19 exons. Two transcripts code for two small proteins, RECQL5 $\alpha$  (with 410 amino acids) and RECQL5 $\gamma$  (435 amino acids) that contain the core helicase motifs. The third transcript encodes the larger RECQL5 $\beta$  isoform (991 amino acids). RECQL5 $\beta$  localizes to the nucleus, whereas the two smaller isoforms are cytoplasmic (10).

RecQ helicases possess the so-called DExH helicase and RecQ-Ct (RecQ C-terminal) regions, which form the catalytic core of the enzyme (6,11). In addition to these conserved regions, RECQL5 $\beta$  contains a long C-terminal region that displays no homology to the other family members. In contrast to BLM and WRN that form oligomeric structures, the

1  
2  
3 RECQL5 $\beta$  is a monomeric protein (12). It contains two separate functional domains. The N-  
4  
5 terminal half of the protein contains the conserved DExH and Zn<sup>2+</sup>-binding domains that  
6  
7 functions as a DNA-dependent ATPase and ATP-dependent 3'-5' DNA helicase. The unique  
8  
9 C-terminal portion possesses an efficient DNA strand-annealing activity (12). However,  
10  
11 strand annealing activity was also seen with the helicase domain only, RECQL5 $\alpha$  (13).  
12  
13  
14 Interestingly, RECQL5 has been found to interact with PCNA, Topoisomerase III  $\alpha/\beta$ , Rad51  
15  
16 and RNA polymerase II (10,12,14-18). The functional significance of all these interactions  
17  
18 has not been fully explored.  
19  
20  
21

22 While the precise role of the human RECQL5 protein in genomic stability has yet to be  
23  
24 determined, it has been found that inactivation of *Recql5* in mouse embryonic stem cells and  
25  
26 embryonic fibroblasts results in a significant increase in the frequency of sister chromatid  
27  
28 exchanges, increased cancer susceptibility and a profound reduction in DNA replication after  
29  
30 the treatment with a topoisomerase I inhibitor, camptothecin (19,20). It has been suggested  
31  
32 that RECQL5 $\beta$  is an important tumor suppressor that acts by preventing inappropriate  
33  
34 homologous recombination (HR) events via Rad51 presynaptic filament disruption (15), thus  
35  
36 implicating RECQL5 in the regulation of homologous recombination.  
37  
38  
39

40  
41 Flap endonuclease 1 (FEN1) is a multifunctional endo/exonuclease that specifically  
42  
43 recognizes 5' flap single-stranded DNA (ssDNA) and regions of ssDNA at single strand-  
44  
45 double strand junctions (21-25). FEN1 is a 5' to 3' exonuclease that acts at nicks in duplex  
46  
47 DNA and also catalyzes the removal of 5' terminal RNA mononucleotide (1). FEN1 was  
48  
49 initially identified as an essential enzyme involved in Okazaki fragment processing (26).  
50  
51 Later, FEN1 was implicated in maintaining genomic stability (24,27) and described as a  
52  
53 tumor suppressor protein (28). FEN1 haploinsufficiency in mice can also lead to tumor  
54  
55 progression (29). Surprisingly, homozygous mutant (*FEN1*<sup>-/-</sup>) cells were viable; however,  
56  
57 compared with wild-type cells, *FEN1*<sup>-/-</sup> cells exhibited a slow growth phenotype, probably due  
58  
59  
60

1  
2  
3 to a high rate of cell death (30). More recently, FEN1 has been shown to have a role in  
4  
5 telomere maintenance (31).  
6

7  
8 FEN1 is associated with long patch base excision repair (LP-BER) by virtue of its ability  
9  
10 to cleave DNA flap structures (32-34). Through both affinity column chromatography and  
11  
12 photoaffinity labeling, FEN1 has been found in a BER protein complex with uracil DNA  
13  
14 glycosylase, AP endonuclease 1 (APE1), polymerase  $\beta$  (pol  $\beta$ ), DNA ligase 1 and PARP-1  
15  
16 (35-37). Moreover, it has been shown that the endonuclease activity of FEN1 is stimulated by  
17  
18 APE1 (38,39). Recently, physical and functional interactions of FEN1 with WRN and BLM  
19  
20 have been characterized (40-43). Both RecQ proteins stimulated FEN1 cleavage activity. We  
21  
22 report here that purified RECQL5 $\beta$  protein stimulates FEN1 cleavage activity on 5' ssDNA  
23  
24 flap, nicked duplex DNA and 5' double-stranded flap substrates. We also show that both  
25  
26 proteins physically interact and co-localize in the nucleus in response to oxidative stress and  
27  
28 DNA damage. We propose that the mammalian RecQ proteins possess a generalized ability to  
29  
30 stimulate FEN1 and thus have the potential to modulate the efficiency of reactions in which  
31  
32 FEN1 participates.  
33  
34  
35  
36  
37  
38  
39  
40

## 41 MATERIALS AND METHODS

### 42 Recombinant proteins

43  
44 Recombinant human RECQL5 $\beta$  helicase was overproduced as a fusion protein with an  
45  
46 intein-chitin-binding domain (CBD) self-cleaving affinity tag in the *E. coli* BL21-codon-Plus-  
47  
48 (DE3)-RIL strain (Stratagene), and purified as previously described (44). FEN1 was a  
49  
50 generous gift from Dr. David Wilson III (National Institute on Aging, National Institutes of  
51  
52 Health, Baltimore, MD, USA). Both proteins were judged to be >95% pure by protein gel  
53  
54 electrophoresis and Simply Blue protein stain (Invitrogen, Figure 1A and B).  
55  
56  
57  
58  
59  
60

1  
2  
3 The helicase activity of the purified RECQL5 $\beta$  was verified by a standard helicase assay  
4 using either M13mp18-based or oligonucleotide-based partial duplexes (Figure 1C and D,  
5  
6  
7  
8 respectively). The enzymatic activity of FEN1 was tested using oligonucleotide duplex with 1  
9  
10 nucleotide (nt) 5' flap (Figure 1E).

### 15 DNA substrates

17 DNA oligonucleotides were synthesized and PAGE purified by Midland Certified  
18 Reagent Co. (Midland, TX) or by Integrated DNA Technologies (San Diego, CA). The  
19  
20 sequences of the oligonucleotides are shown in Table I. Template TEMP and upstream U25  
21  
22 primers together with downstream primers FLAP00, FLAP01, FLAP30 and FLAP60 were  
23  
24 designed to form duplex substrates with a nick, 1 nt 5' flap, 30 nt 5' ssDNA flap and 60 nt 5'  
25  
26 hairpin flap, respectively. Downstream primers were labeled at the 5' end (FLAP00, FLAP01,  
27  
28 FLAP30) with T4 polynucleotide kinase (Optikinase, USB) and [ $\gamma$ <sup>32</sup>P] ATP (GE Health  
29  
30 Sciences) or at the 3' end (FLAP60) with terminal transferase (NEB) and [ $\alpha$ <sup>32</sup>P]dATP (GE  
31  
32 Health Sciences) followed by annealing as described previously (45). GEN1, GEN2, GEN3  
33  
34 and GEN4 oligonucleotides were used for creating duplex substrates with double stranded  
35  
36 flaps. The bubble substrate was designed from oligonucleotides GEN5, GEN6 and GEN7.  
37  
38 GEN1, GEN3 and GEN7 were <sup>32</sup>P labeled at the 3' end and annealed to form duplex with  
39  
40 GEN2, GEN3 and GEN4 (for GEN1) or GEN1, GEN2 and GEN4 (for GEN3) or GEN5 and  
41  
42 GEN6 (for GEN7). The marker substrate for GEN activity of FEN1 against the bubble  
43  
44 substrate was created from 3' end radiolabeled GEN9 annealed to GEN5, GEN6 and GEN8.  
45  
46  
47  
48  
49  
50  
51

52 The M13mp18-based partial-duplex substrate was prepared by annealing the HEL43 43-  
53  
54 mer to circular M13mp18 ssDNA (NEB) and by extension of this molecule by 1 nt using the  
55  
56 Klenow fragment (NEB) and [ $\alpha$ <sup>32</sup>P]dATP as described previously (44). The oligonucleotide-  
57  
58  
59  
60

1  
2  
3 based partial duplexes were designed by annealing 5'-end labeled 22-15A to 22-15B, and 3'-  
4  
5 end labeled HAIR49 to HAIR24.  
6  
7  
8  
9

### 10 **RECQL5 $\beta$ helicase assay**

11  
12 Reactions mixtures (10  $\mu$ l) contained either 0.5 nM M13mp18-based or 1 nt 37 nt-based  
13 or 1 nt 49 nt-based partial duplexes, 2 mM ATP and indicated concentrations of RECQL5 $\beta$ .  
14  
15 Where indicated, replication protein A (RPA) was added at indicated concentrations. Helicase  
16  
17 reactions with M13mp18-based or 37 nt-based partial duplexes were carried out in buffer HA  
18  
19 (50 mM Tris-HCl pH 7.5, 50 mM NaCl, 5 mM MgCl<sub>2</sub>, 50  $\mu$ g/ml BSA, 2 mM ATP, 1 mM  
20  
21 DTT) and helicase reactions with 49 nt-based partial duplex were carried out in HB (30 mM  
22  
23 HEPES pH 7.6, 40 mM KCl, 5% glycerol, 10 mM MgCl<sub>2</sub>, 100  $\mu$ g/ml BSA). Mixtures were  
24  
25 incubated at 37°C for 20 min, and terminated with the addition of 5  $\mu$ l of SDS stop solution  
26  
27 (2% SDS, 50 mM EDTA, 30% glycerol, 0.1% bromophenol blue, 0.1% xylene cyanol).  
28  
29 Products were separated on 12% nondenaturing polyacrylamide gel (acrylamide to bis-  
30  
31 acrylamide, 37.5:1). Radiolabeled DNA was visualized using a Typhoon phosphorImager,  
32  
33 (Typhoon 9400, GE Health Sciences).  
34  
35  
36  
37  
38  
39  
40  
41  
42

### 43 **FEN1 incision assays**

44  
45 Reactions (10  $\mu$ l) contained 1 nM DNA substrate and indicated concentrations of  
46  
47 RECQL5 $\beta$  (or BSA), RPA and/or FEN1 in 30 mM HEPES pH 7.6, 40 mM KCl, 5% glycerol,  
48  
49 10 mM MgCl<sub>2</sub>, 100  $\mu$ g/ml BSA. Where indicated, ATP was added to a final concentration of  
50  
51 2 mM. RECQL5 $\beta$  (or BSA) was mixed with the substrate and buffer on ice, and preincubated  
52  
53 for 10 min prior to the addition of FEN1. Where indicated, RPA was added and preincubated  
54  
55 with RECQL5 $\beta$  before adding FEN1. Reactions were incubated at 37°C for 15 min (unless  
56  
57 indicated otherwise), then terminated with the addition of 10  $\mu$ l of formamide stop solution  
58  
59  
60



1  
2  
3 (90% formamide, 20 mM EDTA, 0.1% bromophenol blue and 0.1% xylene cyanol), and  
4  
5 heated to 95°C for 5 min. For kinetic experiments, reaction mixtures (50  $\mu$ l) contained 1 nM 1  
6  
7 nt 5' flap duplex, 5 nM RECQL5 $\beta$  and 5 nM FEN1. Aliquots (5  $\mu$ l) were removed at different  
8  
9 reaction time points and mixed with the equal amounts of formamide stop solution. Products  
10  
11 were resolved on 20% polyacrylamide, 8 M urea denaturing gels (acrylamide to bis-  
12  
13 acrylamide, 19:1). A Typhoon phosphorImager was used for detection and ImageQuant  
14  
15 software (GE Health Sciences) was used for quantification of the reaction products. Percent  
16  
17 incision was calculated from the equation: percent incision =  $[P/(S + P)] \times 100$ , where  $P$  is  
18  
19 the sum of the intensity of the bands representing incision products and  $S$  the intensity of the  
20  
21 band representing the intact oligonucleotide. Data represent the mean of three independent  
22  
23 experiments with standard deviations shown by error bars.  
24  
25  
26  
27  
28  
29  
30  
31

### 32 **Cell culture**

33  
34 Human HeLa and HEK293T cell lines used in this study were maintained in Dulbecco's  
35  
36 modified Eagle's medium (DMEM, Invitrogen) supplemented with 10% fetal bovine serum  
37  
38 (Invitrogen). Cells were grown in a humidified 5% CO<sub>2</sub> atmosphere at 37°C.  
39  
40  
41  
42

### 43 **Pull-down assays**

44  
45 CBD-tagged RECQL5 $\beta$  was produced in *E. coli* BL21-CodonPlus(DE3)-RIL cells  
46  
47 (Stratagene) as previously described (12). Cells harvested from a 10 ml culture were re-  
48  
49 suspended in 1 ml of NET-150 buffer [10 mM Tris (pH 8.0), 1 mM EDTA, 150 mM NaCl,  
50  
51 10% (v/v) glycerol and 0.1% (v/v) Triton X-100] supplemented with a protease inhibitor  
52  
53 cocktail (Complete, Mini; Roche) and disrupted by sonication followed by centrifugation at  
54  
55 20,000xg for 45 min. Clarified cell extract (typically 50  $\mu$ l-100  $\mu$ l) was incubated with 20  $\mu$ l  
56  
57 of chitin beads (NEB) in a total volume of 400  $\mu$ l of NET-150 buffer for 2 hours at 4°C. After  
58  
59  
60

1  
2  
3 extensive washing with NET-150 buffer, beads were incubated with extract of 293T cells  
4  
5 (800 mg of protein) or recombinant FEN1 protein or GST-FEN1 fragments (200 ng) in 400  $\mu$ l  
6  
7 of NET-150 buffer supplemented with ethidium bromide (50  $\mu$ g/ml) for 2 hours at 4°C.  
8  
9  
10 Bound proteins were analyzed by Western blotting using rabbit polyclonal anti-FEN1  
11  
12 antibody (28).  
13  
14  
15  
16  
17

### 18 **Immunofluorescence**

19  
20 HeLa cells, grown on 4-chambered slides (Lab-Tek), were transfected with the  
21  
22 p3XFLAG-myc-CMV-24 plasmid (Sigma) containing cDNA encoding the full length  
23  
24 RECQL5 using Lipofectamine 2000 (Invitrogen) according to the manufacturer's  
25  
26 recommendations. Twenty-four hours post transfection, the cells were exposed to 100  $\mu$ M  
27  
28 hydrogen peroxide (in plain DMEM) for 30 min at 37°C. Cells were fixed with 3.7%  
29  
30 paraformaldehyde in PBS for 15 min at room temperature and washed five times with PBS,  
31  
32 then permeabilized with 0.2% Triton X-100 in PBS for 10 min on ice. After blocking in PBS  
33  
34 containing 5% BSA for 1 h at 37°C or overnight at 4°C, slides were incubated 1 h at 37°C  
35  
36 with primary antibodies, rabbit polyclonal anti-FLAG (Sigma, 1:200) and mouse monoclonal  
37  
38 anti-FEN1 (Abcam ab462; 1:1000); all antibodies were diluted in blocking solution. Cells  
39  
40 were then rinsed five times with PBS and incubated with Alexa Fluor 488-  
41  
42 conjugated donkey anti-rabbit and Alexa Fluor 647-conjugated goat anti-mouse secondary  
43  
44 antibodies (Invitrogen A21240 and A21206, respectively; 1:1000) for 30 minutes at room  
45  
46 temperature. After washing 5 times with PBS, cells were mounted with Vectashield Hard Set  
47  
48 mounting medium with DAPI (Vector Labs). Images were captured by a Nikon Eclipse  
49  
50 TE2000 confocal microscope and analyzed using Volocity-5 software (Perkin Elmer).  
51  
52  
53  
54  
55  
56  
57  
58  
59  
60

## RESULTS

### RECQL5 $\beta$ stimulates the FEN1 cleavage reaction

RECQL5 $\beta$  was tested for its ability to stimulate FEN1 because WRN, BLM and RECQL4 have been shown to potently stimulate FEN1 (40-42, 46). The DNA substrate used in these studies consisted of a 19 bp duplex with a single unannealed 5' nucleotide adjacent to an upstream 25 bp duplex (1 nt 5' flap). The 1 nt 5' flap substrate was susceptible to FEN1 cleavage and 2 nt and 1 nt products were produced (Figure 2A, lane 2), as previously reported (47). These products result from FEN1 cleavage at the junction between the flap and the downstream double-stranded DNA and endonucleolytic cleavage of the first nucleotide in the downstream duplex DNA. In the presence of 5 nM FEN1, 12% of 1 nM substrate was incised (Figure 2A, lane 2, and B). Under these conditions, we analyzed FEN1 cleavage as a function of RECQL5 $\beta$  concentration. FEN1 cleavage was stimulated ~2-2.5-fold (Figure 2A, lane 3 and 4, respectively, and B). As expected, RECQL5 $\beta$  alone did not incise the substrate (Figure 2A, lane 8). To confirm that the presence of RECQL5 $\beta$  caused true stimulation rather than this being an effect of RECQL5 $\beta$  stabilization of FEN1 in the reaction, we did a control reaction with BSA and found no stimulation of FEN1. In the presence of 5 nM FEN1 and 20 nM BSA only 8% of 1 nM substrate was incised (Figure 2A, lane 9).

RECQL5 $\beta$ , like other helicases, requires ATP for its helicase activity. To examine what effect helicase activity might have on the observed stimulation of FEN1, we added ATP to reactions and repeated the analysis (Figure 2A, lanes 10-18, and B). In the presence of 5 nM FEN1 and 2 mM ATP, 43% of the 1 nM substrate was incised (Figure 2A, lane 11, and B). This increase in FEN1 activity was about 30% more than FEN1 cleavage in the absence of ATP (Figure 2A, lane 2, and B). After addition of ATP, FEN1 cleavage increased by about 30% at RECQL5 $\beta$  concentrations of 1.3 nM and 2.5 nM (Figure 2A, lane 12 and 13,

1  
2  
3 respectively, and B) in comparison to FEN1 cleavage without ATP (Figure 2A, lane 3 and 4,  
4  
5 respectively, and B). These results indicate that the observed increase in cleavage products  
6  
7 was the result of a higher initial rate of FEN1 incision activity in the presence of ATP. The  
8  
9 extent of the reactions was similar plus or minus ATP, 87-84% respectively. RECQL5 $\beta$  alone  
10  
11 did not cleave the substrate and BSA did not stimulate FEN1 incision (Figure 2A, lane 17 and  
12  
13 18, respectively). Based on these results, we conclude that helicase activity of RECQL5 $\beta$  is  
14  
15 not required for FEN1 stimulation.  
16  
17  
18

19  
20 Kinetic analysis of the FEN1 catalyzed cleavage reaction on the 1 nt 5' flap substrate  
21  
22 showed a strong influence of RECQL5 $\beta$  on the rate of FEN1 incision (Figure 3A). In these  
23  
24 experiments, equimolar concentrations of FEN1 and RECQL5 $\beta$  (5 nM) were used. The FEN1  
25  
26 concentration used resulted in a reproducible incision of 6% of the 1 nM DNA substrate after  
27  
28 15 min reaction incubated at 37°C (Figure 3B). Stimulation of FEN1 incision by RECQL5 $\beta$   
29  
30 was detected at time points from 1 to 15 min. After 3 min, FEN1 cleavage in the absence of  
31  
32 RECQL5 $\beta$  was 1.5%; however, in the presence of RECQL5 $\beta$ , FEN1 cleaved 44% of the DNA  
33  
34 substrate (Figure 3B). FEN1 cleavage in the absence and presence of RECQL5 $\beta$  was linear  
35  
36 with respect to time from 1-6 min ( $R^2 = 1.0$  and  $0.97$ , respectively). Linear regression  
37  
38 analyses yielded reaction rates of 9.51 and 0.35 fmol product/min for the RECQL5 $\beta$  + FEN1  
39  
40 and FEN1 only, respectively. This represents a 27.2-fold rate increase in the presence of  
41  
42 RECQL5 $\beta$ . At 12 and 15 minutes, the FEN1 cleavage reaction, in the presence of RECQL5 $\beta$ ,  
43  
44 achieved a plateau of 86-88% substrate incised. In contrast, FEN1 alone only cleaved 6% of  
45  
46 the substrate by the end of 15 min (Figure 3B).  
47  
48  
49  
50  
51  
52  
53  
54  
55  
56  
57  
58  
59  
60

1  
2  
3       **RECQL5 $\beta$  stimulates FEN1 cleavage of duplex DNA substrates containing a long 5'**  
4  
5  
6       **ssDNA flap or a nick**

7  
8       The ability of RECQL5 $\beta$  to stimulate FEN1 cleavage of the 1 nt 5' flap substrate prompted us  
9  
10       to examine whether RECQL5 $\beta$  can also affect the activity of FEN1 on oligonucleotide  
11  
12       substrate with longer 5' ssDNA flaps. Single stranded DNA flap structures may have  
13  
14       important biological functions as they are reaction intermediates during replication or during  
15  
16       long patch base excision repair. Flaps may also appear via strand displacement synthesis  
17  
18       during unscheduled DNA synthesis by a DNA polymerase. RECQL5 $\beta$ 's ability to stimulate  
19  
20       the FEN1 cleavage reaction on a 30 nt 5' ssDNA flap structure was tested. FEN1 alone (0.1  
21  
22       nM) incised 15% of the 1 nM substrate or 25% in the presence of 2 mM ATP (Figure 4A, lane  
23  
24       2 and 11, and B), yielding two products, the 31 nt and to a lesser extent, the 30 nt product. At  
25  
26       equimolar concentrations of RECQL5 $\beta$  and FEN1 (0.1 nM), 32% or 45% of the 5' flap  
27  
28       substrate molecules, in the absence or presence of ATP, respectively, was incised, a 2.1- or  
29  
30       1.8-fold stimulation (Figure 4A, lane 4 and 13, and B). In the absence of ATP, increasing  
31  
32       RECQL5 $\beta$ 's concentration yielded 3.6-4.8-fold stimulation above FEN1's activity alone  
33  
34       (Figure 4A, lanes 5-7 and B). Likewise, in the presence of ATP, FEN1's incision activity was  
35  
36       stimulated 2.4-2.8-fold upon increasing the concentration of RECQL5 $\beta$  (Fig. 4A, lanes 14-16  
37  
38       and B). RECQL5 $\beta$  alone did not catalyze cleavage of the 30 nt flap DNA substrate (Figure  
39  
40       4A, lane 8 and 17). BSA had no influence on the FEN1 incision (Figure 4A, lane 9 and 18).

41  
42       FEN1 has been shown to possess 5' to 3' exonuclease activity on nicked duplex DNA  
43  
44       (48). A nick in the DNA duplex may arise as a consequence of the concerted action of DNA  
45  
46       repair enzymes such as DNA glycosylase and AP endonuclease at the sites of damaged bases.  
47  
48       We tested the effect of RECQL5 $\beta$  on FEN1 cleavage activity at the site of the nick. FEN1 (1  
49  
50       nM) incised 22% or 33% of the nicked DNA duplex substrate in the absence or presence of 2  
51  
52       mM ATP, respectively (Figure 5A, lane 2 and 11, and B). RECQL5 $\beta$  (0.3 nM) stimulated  
53  
54  
55  
56  
57  
58  
59  
60

1  
2  
3 FEN1 to incise 41% or 50%, depending on the presence of ATP, of the nicked DNA duplex, a  
4  
5 1.9- or 1.5-fold stimulation of FEN1 exonuclease activity (Figure 5A, lane 4 and 13, and B).  
6  
7  
8 At equimolar concentrations of RECQL5 $\beta$  and FEN1 (1 nM), FEN1 cleavage increased to  
9  
10 76% or 69% incision in the absence or presence of ATP, respectively, a 3.5- or 2.1-fold  
11  
12 stimulation above FEN1 alone (Figure 5A, lane 6 and 15, and B). RECQL5 $\beta$  has no  
13  
14 endonuclease activity (Figure 5A, lane 8 and 17) and BSA did not stimulate FEN1's activity  
15  
16 (Figure 5A, lane 9 and 18). These results indicate that RECQL5 $\beta$  can activate FEN1's  
17  
18 incision of substrates containing a long 5' ssDNA tail and FEN1's 5' to 3' exonuclease  
19  
20 activity on nicked duplex DNA.  
21  
22  
23  
24  
25  
26

#### 27 **RECQL5 $\beta$ does not stimulate FEN1 cleavage of a 5' hairpin flap substrate.**

28  
29 It has been shown that flap substrates with secondary structures within the 5' flap  
30  
31 effectively inhibit FEN1 cleavage (41,49). Therefore, we tested RECQL5 $\beta$ 's ability to  
32  
33 activate FEN1 cleavage on a DNA substrate containing a 5' flap with a hairpin structure of 24  
34  
35 nt in the annealed region (Supplementary Figure 1). In the presence of 2 nM FEN1 about  
36  
37 45% of the 1 nM substrate was incised, and the addition of RECQL5 $\beta$  did not activate FEN1  
38  
39 (Supplementary Figure 1C lanes 3-10). Addition of 2 mM ATP and RECQL5 $\beta$  clearly  
40  
41 inhibited incision by FEN1 (Supplementary Figure 1C lanes 15-22).  
42  
43  
44

45  
46 To investigate if the RECQL5 $\beta$  helicase could unwind an annealed region within the 5'  
47  
48 flap and facilitate its cleavage by FEN1, a partial duplex substrate (1 nM), mimicking a 5'  
49  
50 hairpin flap substrate was constructed and used to screen for RECQL5 $\beta$  helicase activity. In  
51  
52 the presence of RPA, RECQL5 $\beta$  helicase displayed weak unwinding of the annealed region  
53  
54 within the 5' flap (Supplementary Figure 2A). Subsequently, we investigated FEN1 cleavage  
55  
56 of the 5' hairpin flap substrate in reactions supplemented with RECQL5 $\beta$ , 2 mM ATP and  
57  
58 RPA. We tested two RECQL5 $\beta$  concentrations and neither showed FEN1 stimulation  
59  
60

1  
2  
3 (Supplementary Figure 2B). These results indicate that RECQL5 $\beta$  does not stimulate FEN1  
4  
5  
6 incision of a 5' flap substrate with a secondary structure, and the helicase activity of the  
7  
8 RECQL5 $\beta$  cannot facilitate this reaction.  
9

### 10 11 12 **RECQL5 $\beta$ effects on GEN activity of FEN1 on double-stranded flaps and bubble** 13 14 15 **substrates.** 16

17  
18 The gap endonuclease (GEN) activity of FEN1 is critical for resolving stalled replication  
19  
20 forks. It is responsible for cleavage of ssDNA regions that accumulate extensively in response  
21  
22 to replication fork arrest (25). GEN activity specifically incises DNA replication-fork-like  
23  
24 structures at the ssDNA region on either the lagging or the leading strand template. Therefore,  
25  
26 DNA substrates were prepared with 3' and 5' double-stranded flap structures, which resemble  
27  
28 DNA replication forks, and RECQL5 $\beta$  was tested for its ability to enhance FEN1 cleavage on  
29  
30 such structures. FEN1 produced a GEN cleavage activity of 15% (2 nM FEN1) on the leading  
31  
32 strand substrate (Figure 6A) and 24% (0.5 nM FEN1) on the lagging strand structure (Figure  
33  
34 6B, and C). There was also a strong 5' exonuclease activity of FEN1 on the leading strand  
35  
36 (Figure 6A). RECQL5 $\beta$  did not increase GEN cleavage on the leading strand in the  
37  
38 concentration range of 0.5-8 nM and addition of ATP slightly decreased the rate of GEN  
39  
40 cleavage (Figure 6A, lanes 3-7, and lanes 12-16). However, RECQL5 $\beta$  in the absence of ATP  
41  
42 significantly increased GEN cleavage on the lagging strand, ~2-2.7-fold (Figure 6B, lanes 5-  
43  
44 7, and C). Addition of ATP resulted in less efficient stimulation of lagging strand GEN  
45  
46 activity by RECQL5 $\beta$  (Figure 6B, lanes 12-16, and C). RECQL5 $\beta$  alone had no incision  
47  
48 activity (Figure 6A and B, lanes 8 and 17).  
49  
50  
51  
52  
53  
54

55  
56 Next, a bubble substrate was constructed which mimics a stalled replication fork  
57  
58 structures (Supplementary Figure 3B). FEN1 (0.5 nM) cleaved the ssDNA-dsDNA junctions  
59  
60 of the bubble substrate, denoted as P<sub>GENa</sub> and P<sub>GENb</sub> (Supplementary Figure 3C). The

1  
2  
3 exonuclease activity of FEN1 was also slightly active on the 5' end of bubble structure  
4  
5 generating P<sub>5'EXO</sub> (Supplementary Figure 3C). The cleavage of the bubble structure by FEN1  
6  
7 alone (0.5 nM) resulted in 34% of P<sub>GENa</sub> and 5% of P<sub>GENb</sub> (Supplementary Figure 3C, lane 2).  
8  
9  
10 RECQL5 $\beta$  failed to stimulate FEN1's GEN cleavage in the concentration range of 0.1-2 nM  
11  
12 and addition of ATP slightly decreased the rate of the cleavage (Supplementary Figure 3C,  
13  
14 lanes 3-7, and lanes 12-16).  
15  
16  
17  
18  
19

### 20 **RECQL5 $\beta$ and FEN1 interact physically**

21  
22 To determine whether RECQL5 $\beta$  and FEN1 interact physically, we performed affinity  
23  
24 pull-down assays. RECQL5 $\beta$  was expressed in bacteria as a fusion with a CBD tag and bound  
25  
26 to chitin beads. The beads were subsequently incubated with either total extract of  
27  
28 exponentially growing human embryonic kidney cells HEK293T or with purified FEN1  
29  
30 protein. We found that endogenous FEN1 was bound to RECQL5 $\beta$  beads, but not to control  
31  
32 beads coated with CBD (Figure 7A). Recombinant FEN1 was found to be bound to both  
33  
34 RECQL5 $\beta$  beads and beads coated with CBD only. However, the affinity of FEN1 for the  
35  
36 RECQL5 $\beta$  beads was higher than that for the control, indicating a specific interaction (Figure  
37  
38 RECQL5 $\beta$  beads was higher than that for the control, indicating a specific interaction (Figure  
39  
40 7B).  
41  
42

43  
44 Affinity pull-down assays were also used to map the region on FEN1 that is important for  
45  
46 the RECQL5 $\beta$ :FEN1 interaction. A graphic diagram of FEN1 and the GST fragments are  
47  
48 shown in Figure 7C. As above, RECQL5 $\beta$  was bound to chitin beads then incubated with the  
49  
50 purified GST-FEN1 fragments. As can be seen in Figure 7D, the fragment of FEN1 encoding  
51  
52 the largest C-terminal fragment of FEN1 (#54) was preferentially bound by RECQL5 $\beta$ .  
53  
54

55  
56 To test whether RECQL5 $\beta$  and FEN1 interact *in vivo*, RECQL5 $\beta$  was immunoprecipitated  
57  
58 from the HEK293T extract and the resulting immunoprecipitate was subjected to Western blot  
59  
60



1  
2  
3 analysis. We could not detect FEN1 in this immunoprecipitate, indicating that RECQL5 $\beta$  and  
4  
5 FEN1 do not form a stable complex *in vivo* (data not shown).  
6  
7  
8  
9

### 10 **RECQL5 $\beta$ co-localizes with FEN1 in human cells**

11  
12 We investigated the subcellular localization of 3XFlag-RECQL5 $\beta$ -Myc and endogenous  
13  
14 FEN1 by confocal microscopy to explore whether 3XFlag-RECQL5 $\beta$ -Myc co-localizes with  
15  
16 FEN1 before and after DNA damage. We transiently transfected HeLa cells with plasmid  
17  
18 encoding a full length copy of 3XFlag-RECQL5-Myc encoding sequence. Twenty-four hours  
19  
20 post transfection, the cells were treated with 100  $\mu$ M H<sub>2</sub>O<sub>2</sub> for 30 min to introduce oxidative  
21  
22 stress and DNA damage. In asynchronous untreated HeLa cells, FEN1 and RECQL5 $\beta$   
23  
24 displayed diffused nuclear staining with some concentrated foci (Figure 8). In H<sub>2</sub>O<sub>2</sub> treated  
25  
26 cells, we observed that both FEN1 and RECQL5 $\beta$  formed distinct nucleolar foci and these  
27  
28 foci co-localized (Figure 8).  
29  
30  
31  
32  
33  
34  
35  
36  
37

### 38 **DISCUSSION**

39 FEN1 participates in many processes within the cell. Specifically, it has been shown to  
40  
41 play a role in base excision repair, homologous recombination, lagging strand DNA  
42  
43 replication, re-initiation of stalled replications forks and telomere stability (24,31,50). Here,  
44  
45 we report that human RECQL5 $\beta$  physically interacts with FEN1 and efficiently stimulates  
46  
47 FEN1 cleavage activity on a variety of DNA substrates that are proposed intermediates in  
48  
49 DNA replication and repair. It has been reported recently that that mouse RECQL5 $\beta$  plays an  
50  
51 important role in maintaining active DNA replication to prevent the collapse of replication  
52  
53 forks and the accumulation of DSBs (20). Additionally, RECQL5 $\beta$  is associated with the  
54  
55 DNA replication machinery and is present at the sites of stalled replication forks (14). The  
56  
57 identification of RECQL5 $\beta$  in a replication complex suggests that RECQL5 $\beta$  may play a  
58  
59  
60

1  
2  
3 direct role in replication. It has also been suggested that FEN1 participates in lagging strand  
4 synthesis *in vivo* (26) through the processing of Okazaki fragments. RECQL5 $\beta$  may facilitate  
5 FEN1 cleavage of the remaining ribonucleotide (5' flap substrates), a step required prior to  
6 the ligation of Okazaki fragments (1). Our results revealing the ability of RECQL5 $\beta$  to  
7 potently stimulate cleavage of the 1 nt, as well as longer, 30 nt 5' flap, of a DNA duplex  
8 (Figure 2-4) strongly support this idea. Moreover, we show that RECQL5 $\beta$  is capable of  
9 stimulating FEN1 cleavage on a substrate that mimics the DNA replication fork; however,  
10 only on the lagging strand. RECQL5 $\beta$  failed to stimulate GEN activity on the leading strand  
11 (Figure 6). This finding might have important implications during DNA replication of the  
12 lagging stand by facilitating processing of Okazaki fragments. The 3' to 5' helicase activity of  
13 RECQL5 $\beta$  could function during replication restart, RECQL5 $\beta$  may translocate to the stalled  
14 fork and ensure efficient removal of the new lagging strand by its abilities to displace the  
15 nascent Okazaki fragment and stimulate the nuclease activities of FEN1, similar to a model  
16 proposed for the coordinate action of *Escherichia coli* RecQ and RecJ (51). This would  
17 prevent deleterious DNA strand breakage and elevated recombination.  
18  
19  
20  
21  
22  
23  
24  
25  
26  
27  
28  
29  
30  
31  
32  
33  
34  
35  
36  
37

38 Previously, human WRN, BLM and RECQL4 have been shown to stimulate FEN1  
39 catalytic activity (25, 40-42, 46). Thus it seems that there is a conserved interaction between  
40 the human RecQ helicases with FEN1 which is likely to be important for the efficient  
41 processing of DNA. In contrast to RECQL5 $\beta$ , WRN has the ability to stimulate FEN1  
42 cleavage on both strands, lagging and leading, within the replication-like-structure as well as  
43 in collapsed replication fork substrate (25). The stimulation of FEN1 activity by WRN is  
44 independent of WRN catalytic activities and is mediated by a C-terminal region of the WRN  
45 protein (40). We also demonstrate that helicase activity is not required for stimulation of  
46 FEN1 cleavage by RECQL5 $\beta$  (Figure 2). Interestingly, it has been reported recently that  
47  
48  
49  
50  
51  
52  
53  
54  
55  
56  
57  
58  
59  
60

1  
2  
3 inhibition of RNA polymerase II transcription by RECQL5 $\beta$  is also independent of its  
4  
5 helicase activity (52).  
6

7  
8 FEN1 is a multifunctional protein and more than 20 proteins are known to interact with it.  
9  
10 Recently, deletion and alanine substitution mutagenesis of FEN1 was used to map sites where  
11  
12 PCNA, WRN, APE1, EndoG and the Rad9-Rad1-Hus1 complex interact with FEN1 (53). All  
13  
14 the proteins tested interacted with the very C-terminus of FEN1. Consistent with how other  
15  
16 proteins interact with FEN1, we show that RECQL5 $\beta$ 's interaction with FEN1 is mediated by  
17  
18 the C-terminus of FEN1 (Figure 7).  
19  
20  
21

22  
23 There are growing pieces of evidence suggesting that the RecQ DNA helicases operate in  
24  
25 various DNA repair processes induced by DNA replication defects, base excision repair and  
26  
27 non-homologous end-joining of double strand break repair. A role for FEN1 in BER is well  
28  
29 documented both *in vitro* and *in vivo* (32,54). After the damaged base is replaced by the  
30  
31 correct one through the concerted action of DNA glycosylases, APE and Pol  $\beta$ , the repair is  
32  
33 directed into different sub-pathways, single-nucleotide and LP-BER, depending on whether  
34  
35 the sugar residue in the flap has been further modified. The LP-BER pathway requires FEN1  
36  
37 to effectively remove the modified 5'-dRP-containing flap. Pol  $\beta$  has been previously  
38  
39 proposed to independently displace the downstream DNA strand and create a 2-11 nt flap for  
40  
41 FEN1 cleavage (32,55). However, Pol  $\beta$  DNA synthesis on DNA containing a flap or nicked  
42  
43 DNA is poor indicating that generation of a nicked flap intermediate would be a rate-limiting  
44  
45 step of LP-BER DNA synthesis. A recent study demonstrated that FEN1 cleavage activity is  
46  
47 critical in Pol  $\beta$ -mediated LP-BER DNA synthesis because it removes the blocking one  
48  
49 nucleotide flaps (56). According to the proposed hypothesis of a "Run and Hit" mechanism,  
50  
51 Pol  $\beta$  relies on FEN1 cleavage to remove these barriers and proceed with LP-BER.  
52  
53  
54  
55  
56

57  
58 DNA substrates containing flaps, as used in our study (Table 1), can mimic a LP-BER  
59  
60 intermediate because the single-nucleotide gap has already been filled. The fact that

1  
2  
3 RECQL5 $\beta$  cooperates with FEN1 on such intermediates poses a question of whether  
4  
5 RECQL5 $\beta$  may be engaged in LP-BER *in vivo* by stimulating FEN1 to cleave the one  
6  
7 nucleotide or longer flap. We show that in HeLa cells treated with hydrogen peroxide, which  
8  
9 introduces oxidative damage to DNA, there is mobilization of RECQL5 $\beta$  and FEN1 and the  
10  
11 foci of both proteins co-localize (Figure 8). Future work will focus on elucidating the  
12  
13 potential role of RECQL5 $\beta$  in LP-BER *in vivo*.  
14  
15

16  
17 Previously, WRN has been shown to interact and stimulate strand displacement DNA  
18  
19 synthesis by Pol  $\beta$  (57,58). This prompted us to check whether RECQL5 $\beta$  could also  
20  
21 cooperate with Pol  $\beta$  as well as with another important BER enzyme, AP endonuclease,  
22  
23 APE1. However, our results showed that RECQL5 $\beta$  does not stimulate Pol  $\beta$  or APE1 (not  
24  
25 shown).  
26  
27

28  
29 To summarize, our results suggest that RECQL5 $\beta$  can modulate FEN1's activity and since  
30  
31 FEN1 participates in many DNA metabolic pathways, the expression of RECQL5 $\beta$  has the  
32  
33 potential to influence all of these FEN1-dependent processes as well. Further research is  
34  
35 needed to evaluate the true set of pathways in which RECQL5 $\beta$  participates.  
36  
37  
38  
39  
40

## 41 FUNDING

42  
43 This research was supported by the Intramural Research Program of the NIH, National  
44  
45 Institute on Aging, annual report Z01 AG000726-16. S. Schwendener and P. Janscak were  
46  
47 supported by the Swiss National Science Foundation.  
48  
49  
50

## 51 ACKNOWLEDGMENTS

52  
53 We would like to thank Dr. Marie Rossi and Dr. Takashi Tadokoro for critically reading this  
54  
55 manuscript. We would like to thank Dr. Tomasz Kulikowicz for construction of the p3XFlag-  
56  
57  
58  
59  
60

1  
2  
3  
4  
5  
6  
7  
8  
9  
10  
11  
12  
13  
14  
15  
16  
17  
18  
19  
20  
21  
22  
23  
24  
25  
26  
27  
28  
29  
30  
31  
32  
33  
34  
35  
36  
37  
38  
39  
40  
41  
42  
43  
44  
45  
46  
47  
48  
49  
50  
51  
52  
53  
54  
55  
56  
57  
58  
59  
60

RECQ5L $\beta$ -Myc CMV 24 plasmid. We would like to thank Dr. David Wilson III (NIA) for the FEN1 protein.

## REFERENCES

1. Waga, S. and Stillman, B. (1998) The DNA replication fork in eukaryotic cells. *Annu. Rev. Biochem.*, **67**, 721-751.
2. Kowalczykowski, S.C., Dixon, D.A., Eggleston, A.K., Lauder, S.D. and Rehrauer, W.M. (1994) Biochemistry of homologous recombination in *Escherichia coli*. *Microbiol. Rev.*, **58**, 401-465.
3. Eisen, A. and Lucchesi, J.C. (1998) Unraveling the role of helicases in transcription. *Bioessays*, **20**, 634-641.
4. Sharma, S., Stumpo, D.J., Balajee, A.S., Bock, C.B., Lansdorp, P.M., Brosh, R.M., Jr. and Blackshear, P.J. (2007) RECQL, a member of the RecQ family of DNA helicases, suppresses chromosomal instability. *Mol. Cell Biol.*, **27**, 1784-1794.
5. Hickson, I.D. (2003) RecQ helicases: caretakers of the genome. *Nat. Rev. Cancer*, **3**, 169-178.
6. Bachrati, C.Z. and Hickson, I.D. (2003) RecQ helicases: suppressors of tumorigenesis and premature aging. *Biochem. J.*, **374**, 577-606.
7. Kitao, S., Shimamoto, A., Goto, M., Miller, R.W., Smithson, W.A., Lindor, N.M. and Furuichi, Y. (1999) Mutations in RECQL4 cause a subset of cases of Rothmund-Thomson syndrome. *Nat. Genet.*, **22**, 82-84.
8. Lindor, N.M., Furuichi, Y., Kitao, S., Shimamoto, A., Arndt, C. and Jalal, S. (2000) Rothmund-Thomson syndrome due to RECQ4 helicase mutations: report and clinical and molecular comparisons with Bloom syndrome and Werner syndrome. *Am. J. Med. Genet.*, **90**, 223-228.
9. Yu, C.E., Oshima, J., Fu, Y.H., Wijsman, E.M., Hisama, F., Alisch, R., Matthews, S., Nakura, J., Miki, T., Ouais, S. *et al.* (1996) Positional cloning of the Werner's syndrome gene. *Science*, **272**, 258-262.
10. Shimamoto, A., Nishikawa, K., Kitao, S. and Furuichi, Y. (2000) Human RecQ5 $\beta$ , a large isomer of RecQ5 DNA helicase, localizes in the nucleoplasm and interacts with topoisomerases 3 $\alpha$  and 3 $\beta$ . *Nucleic Acids Res.*, **28**, 1647-1655.
11. Bernstein, D.A. and Keck, J.L. (2003) Domain mapping of *Escherichia coli* RecQ defines the roles of conserved N- and C-terminal regions in the RecQ family. *Nucleic Acids Res.*, **31**, 2778-2785.
12. Garcia, P.L., Liu, Y., Jiricny, J., West, S.C. and Janscak, P. (2004) Human RECQ5 $\beta$ , a protein with DNA helicase and strand-annealing activities in a single polypeptide. *EMBO J.*, **23**, 2882-2891.
13. Ren, H., Dou, S.X., Zhang, X.D., Wang, P.Y., Kanagaraj, R., Liu, J.L., Janscak, P., Hu, J.S. and Xi, X.G. (2008) The zinc-binding motif of human RECQ5 $\beta$  suppresses the intrinsic strand-annealing activity of its DEXH helicase domain and is essential for the helicase activity of the enzyme. *Biochem J*, **412**, 425-433.
14. Kanagaraj, R., Saydam, N., Garcia, P.L., Zheng, L. and Janscak, P. (2006) Human RECQ5 $\beta$  helicase promotes strand exchange on synthetic DNA structures resembling a stalled replication fork. *Nucleic Acids Res.*, **34**, 5217-5231.
15. Hu, Y., Raynard, S., Sehorn, M.G., Lu, X., Bussen, W., Zheng, L., Stark, J.M., Barnes, E.L., Chi, P., Janscak, P. *et al.* (2007) RECQL5/Recql5 helicase regulates

- homologous recombination and suppresses tumor formation via disruption of Rad51 presynaptic filaments. *Genes Dev*, **21**, 3073-3084.
16. Otsuki, M., Seki, M., Inoue, E., Abe, T., Narita, Y., Yoshimura, A., Tada, S., Ishii, Y. and Enomoto, T. (2008) Analyses of functional interaction between RECQL1, RECQL5, and BLM which physically interact with DNA topoisomerase IIIalpha. *Biochim Biophys Acta*, **1782**, 75-81.
  17. Aygun, O., Svejstrup, J. and Liu, Y. (2008) A RECQ5-RNA polymerase II association identified by targeted proteomic analysis of human chromatin. *Proc Natl Acad Sci U S A*, **105**, 8580-8584.
  18. Izumikawa, K., Yanagida, M., Hayano, T., Tachikawa, H., Komatsu, W., Shimamoto, A., Futami, K., Furuichi, Y., Shinkawa, T., Yamauchi, Y. *et al.* (2008) Association of human DNA helicase RecQ5beta with RNA polymerase II and its possible role in transcription. *Biochem J*, **413**, 505-516.
  19. Hu, Y., Lu, X., Barnes, E., Yan, M., Lou, H. and Luo, G. (2005) Recq15 and Blm RecQ DNA helicases have nonredundant roles in suppressing crossovers. *Mol. Cell Biol.*, **25**, 3431-3442.
  20. Hu, Y., Lu, X., Zhou, G., Barnes, E.L. and Luo, G. (2009) Recq15 plays an important role in DNA replication and cell survival after camptothecin treatment. *Mol Biol Cell*, **20**, 114-123.
  21. Harrington, J.J. and Lieber, M.R. (1994) Functional domains within FEN-1 and RAD2 define a family of structure-specific endonucleases: implications for nucleotide excision repair. *Genes Dev.*, **8**, 1344-1355.
  22. Murante, R.S., Huang, L., Turchi, J.J. and Bambara, R.A. (1994) The calf 5'- to 3'- exonuclease is also an endonuclease with both activities dependent on primers annealed upstream of the point of cleavage. *J. Biol. Chem.*, **269**, 1191-1196.
  23. Lieber, M.R. (1997) The FEN-1 family of structure-specific nucleases in eukaryotic DNA replication, recombination and repair. *Bioessays*, **19**, 233-240.
  24. Liu, Y., Kao, H.I. and Bambara, R.A. (2004) Flap endonuclease 1: a central component of DNA metabolism. *Annu. Rev. Biochem.*, **73**, 589-615.
  25. Zheng, L., Zhou, M., Chai, Q., Parrish, J., Xue, D., Patrick, S.M., Turchi, J.J., Yannone, S.M., Chen, D. and Shen, B. (2005) Novel function of the flap endonuclease 1 complex in processing stalled DNA replication forks. *EMBO Rep*, **6**, 83-89.
  26. Bambara, R.A., Murante, R.S. and Henricksen, L.A. (1997) Enzymes and reactions at the eukaryotic DNA replication fork. *J. Biol. Chem.*, **272**, 4647-4650.
  27. Vallen, E.A. and Cross, F.R. (1995) Mutations in RAD27 define a potential link between G1 cyclins and DNA replication. *Mol. Cell Biol.*, **15**, 4291-4302.
  28. Henneke, G., Friedrich-Heineken, E. and Hubscher, U. (2003) Flap endonuclease 1: a novel tumour suppresser protein. *Trends Biochem. Sci.*, **28**, 384-390.
  29. Kucherlapati, M., Yang, K., Kuraguchi, M., Zhao, J., Lia, M., Heyer, J., Kane, M.F., Fan, K., Russell, R., Brown, A.M. *et al.* (2002) Haploinsufficiency of Flap endonuclease (Fen1) leads to rapid tumor progression. *Proc. Natl. Acad. Sci. USA*, **99**, 9924-9929.
  30. Matsuzaki, Y., Adachi, N. and Koyama, H. (2002) Vertebrate cells lacking FEN-1 endonuclease are viable but hypersensitive to methylating agents and H<sub>2</sub>O<sub>2</sub>. *Nucleic Acids Res.*, **30**, 3273-3277.
  31. Saharia, A., Guittat, L., Crocker, S., Lim, A., Steffen, M., Kulkarni, S. and Stewart, S.A. (2008) Flap endonuclease 1 contributes to telomere stability. *Curr Biol*, **18**, 496-500.

- 1  
2  
3 32. Klungland, A. and Lindahl, T. (1997) Second pathway for completion of human DNA  
4 base excision-repair: reconstitution with purified proteins and requirement for DNase  
5 IV (FEN1). *EMBO J.*, **16**, 3341-3348.  
6  
7 33. Shibata, Y. and Nakamura, T. (2002) Defective flap endonuclease 1 activity in  
8 mammalian cells is associated with impaired DNA repair and prolonged S phase  
9 delay. *J. Biol. Chem.*, **277**, 746-754.  
10  
11 34. Prasad, R., Lavrik, O.I., Kim, S.J., Kedar, P., Yang, X.P., Vande Berg, B.J. and  
12 Wilson, S.H. (2001) DNA polymerase  $\beta$ -mediated long patch base excision repair.  
13 Poly(ADP-ribose)polymerase-1 stimulates strand displacement DNA synthesis. *J.*  
14 *Biol. Chem.*, **276**, 32411-32414.  
15  
16 35. Prasad, R., Singhal, R.K., Srivastava, D.K., Molina, J.T., Tomkinson, A.E. and  
17 Wilson, S.H. (1996) Specific interaction of DNA polymerase  $\beta$  and DNA ligase I in a  
18 multiprotein base excision repair complex from bovine testis. *J. Biol. Chem.*, **271**,  
19 16000-16007.  
20  
21 36. Lavrik, O.I., Prasad, R., Sobol, R.W., Horton, J.K., Ackerman, E.J. and Wilson, S.H.  
22 (2001) Photoaffinity labeling of mouse fibroblast enzymes by a base excision repair  
23 intermediate. Evidence for the role of poly(ADP-ribose) polymerase-1 in DNA repair.  
24 *J. Biol. Chem.*, **276**, 25541-25548.  
25  
26 37. Cistulli, C., Lavrik, O.I., Prasad, R., Hou, E. and Wilson, S.H. (2004) AP  
27 endonuclease and poly(ADP-ribose) polymerase-1 interact with the same base  
28 excision repair intermediate. *DNA Repair*, **3**, 581-591.  
29  
30 38. Dianova, II, Bohr, V.A. and Dianov, G.L. (2001) Interaction of human AP  
31 endonuclease 1 with flap endonuclease 1 and proliferating cell nuclear antigen  
32 involved in long-patch base excision repair. *Biochemistry*, **40**, 12639-12644.  
33  
34 39. Ranalli, T.A., Tom, S. and Bambara, R.A. (2002) AP endonuclease 1 coordinates flap  
35 endonuclease 1 and DNA ligase I activity in long patch base excision repair. *J. Biol.*  
36 *Chem.*, **277**, 41715-41724.  
37  
38 40. Brosh, R.M., Jr., von Kobbe, C., Sommers, J.A., Karmakar, P., Opresko, P.L.,  
39 Piotrowski, J., Dianova, I., Dianov, G.L. and Bohr, V.A. (2001) Werner syndrome  
40 protein interacts with human flap endonuclease 1 and stimulates its cleavage activity.  
41 *Embo J.*, **20**, 5791-5801.  
42  
43 41. Brosh, R.M., Jr., Driscoll, H.C., Dianov, G.L. and Sommers, J.A. (2002) Biochemical  
44 characterization of the WRN-FEN-1 functional interaction. *Biochemistry*, **41**, 12204-  
45 12216.  
46  
47 42. Sharma, S., Sommers, J.A., Wu, L., Bohr, V.A., Hickson, I.D. and Brosh, R.M., Jr.  
48 (2004) Stimulation of flap endonuclease-1 by the Bloom's syndrome protein. *J. Biol.*  
49 *Chem.*, **279**, 9847-9856.  
50  
51 43. Sharma, S., Otterlei, M., Sommers, J.A., Driscoll, H.C., Dianov, G.L., Kao, H.I.,  
52 Bambara, R.A. and Brosh, R.M., Jr. (2004) WRN helicase and FEN-1 form a complex  
53 upon replication arrest and together process branchmigrating DNA structures  
54 associated with the replication fork. *Mol. Biol. Cell*, **15**, 734-750.  
55  
56 44. Janscak, P., Garcia, P.L., Hamburger, F., Makuta, Y., Shiraishi, K., Imai, Y., Ikeda, H.  
57 and Bickle, T.A. (2003) Characterization and mutational analysis of the RecQ core of  
58 the bloom syndrome protein. *J. Mol. Biol.*, **330**, 29-42.  
59  
60 45. Speina, E., Zielinska, M., Barbin, A., Gackowski, D., Kowalewski, J., Graziewicz,  
M.A., Siedlecki, J.A., Olinski, R. and Tudek, B. (2003) Decreased repair activities of  
1, $N^6$ -ethenoadenine and 3, $N^4$ -ethenocytosine in lung adenocarcinoma patients. *Cancer*  
*Res.*, **63**, 4351-4357.  
46. Schurman, S.H., Hedayati, M., Wang, Z., Singh, D.K., Speina, E., Zhang, Y., Becker,  
K., Macris, M., Sung, P., Wilson, D.M., 3rd *et al.* (2009) Direct and indirect roles of

- 1  
2  
3  
4  
5  
6  
7  
8  
9  
10  
11  
12  
13  
14  
15  
16  
17  
18  
19  
20  
21  
22  
23  
24  
25  
26  
27  
28  
29  
30  
31  
32  
33  
34  
35  
36  
37  
38  
39  
40  
41  
42  
43  
44  
45  
46  
47  
48  
49  
50  
51  
52  
53  
54  
55  
56  
57  
58  
59  
60
- RECQL4 in modulating base excision repair capacity. *Hum Mol Genet*, **18**, 3470-3483.
47. Tom, S., Henricksen, L.A. and Bambara, R.A. (2000) Mechanism whereby proliferating cell nuclear antigen stimulates flap endonuclease 1. *J. Biol. Chem.*, **275**, 10498-10505.
48. Wu, X., Li, J., Li, X., Hsieh, C.L., Burgers, P.M. and Lieber, M.R. (1996) Processing of branched DNA intermediates by a complex of human FEN-1 and PCNA. *Nucleic Acids Res*, **24**, 2036-2043.
49. Henricksen, L.A., Tom, S., Liu, Y. and Bambara, R.A. (2000) Inhibition of flap endonuclease 1 by flap secondary structure and relevance to repeat sequence expansion. *J Biol Chem*, **275**, 16420-16427.
50. Shen, B., Singh, P., Liu, R., Qiu, J., Zheng, L., Finger, L.D. and Alas, S. (2005) Multiple but dissectible functions of FEN-1 nucleases in nucleic acid processing, genome stability and diseases. *Bioessays*, **27**, 717-729.
51. Courcelle, J. and Hanawalt, P.C. (1999) RecQ and RecJ process blocked replication forks prior to the resumption of replication in UV-irradiated *Escherichia coli*. *Mol. Gen. Genet.*, **262**, 543-551.
52. Aygun, O., Xu, X., Liu, Y., Takahashi, H., Kong, S.E., Conaway, R.C., Conaway, J.W. and Svejstrup, J.Q. (2009) Direct Inhibition of RNA Polymerase II Transcription by RECQL5. *J Biol Chem*, **284**, 23197-23203.
53. Guo, Z., Chavez, V., Singh, P., Finger, L.D., Hang, H., Hegde, M.L. and Shen, B. (2008) Comprehensive mapping of the C-terminus of flap endonuclease-1 reveals distinct interaction sites for five proteins that represent different DNA replication and repair pathways. *J Mol Biol*, **377**, 679-690.
54. Kim, K., Biade, S. and Matsumoto, Y. (1998) Involvement of flap endonuclease 1 in base excision DNA repair. *J. Biol. Chem.*, **273**, 8842-8848.
55. Dianov, G.L., Prasad, R., Wilson, S.H. and Bohr, V.A. (1999) Role of DNA polymerase beta in the excision step of long patch mammalian base excision repair. *J. Biol. Chem.*, **274**, 13741-13743.
56. Liu, Y., Beard, W.A., Shock, D.D., Prasad, R., Hou, E.W. and Wilson, S.H. (2005) DNA polymerase beta and flap endonuclease 1 enzymatic specificities sustain DNA synthesis for long patch base excision repair. *J. Biol. Chem.*, **280**, 3665-3674.
57. Harrigan, J.A., Opresko, P.L., von Kobbe, C., Kedar, P.S., Prasad, R., Wilson, S.H. and Bohr, V.A. (2003) The Werner syndrome protein stimulates DNA polymerase beta strand displacement synthesis via its helicase activity. *J Biol Chem*, **278**, 22686-22695.
58. Harrigan, J.A., Wilson, D.M., 3rd, Prasad, R., Opresko, P.L., Beck, G., May, A., Wilson, S.H. and Bohr, V.A. (2006) The Werner syndrome protein operates in base excision repair and cooperates with DNA polymerase beta. *Nucleic Acids Res*, **34**, 745-754.



Table I. Oligonucleotide sequences for DNA substrates (5' to 3')

Oligonucleotide, size	Sequence
TEMP, 44 nt	GCCTGGCCGTCGTTTTACGGTCGTGACTGGGAAAACCCTGGCG
Downstream primers	
FLAP00, 19 nt	GTAAAACGACGGCCAGTGC
FLAP01, 20nt	AGTAAAACGACGGCCAGTGC
FLAP30, 49 nt	TTTTTTTTTTTTTTTTTTTTTTTTTTTTTCCAAGTAAAACGACGGCCAGTGC
FLAP60, 79 nt	AGGTCTCGAGGCCTGCTCCTGCTCTATTATGAGCAGGAGCAGGCCTC GAGACCTTTCCAAGTAAAACGACGGCCAGTGC
Upstream primer	
U25, 25 nt	CGCCAGGGTTTTCCAGTCACGACC
GEN primers	
GEN1, 34 nt	GATGTCAAGCAGTCCTAACTTTGAGGCAGAGTCC
GEN2, 18 nt	TTAGGACTGCTTGACATC
GEN3, 30 nt	GGACTCTGCCTCAAGACGGTAGTCAACGTG
GEN4, 14 nt	CACGTTGACTACCG
GEN5, 80 nt	GTTAAGATAGGTCTGCTTGGGATGTCAAGCAGTCCTAACTGGAAATC TAGCTCTGTGGAGTTGAGGCAGAGTCCTTAAGC
GEN6, 40 nt	CTCCACAGAGCTAGATTTCCAGTTAGGACTGCTTGACATC
GEN7, 80 nt	GCTTAAGGACTCTGCCTCAAATCGTCAGGGTTTTCTAAAGAAGCCGAC GGTAGTCAACGTGCCAAGCAGACCTATCTTAAC
GEN8, 20 nt	GCTTTAGGACTCTGCCTCAA
GEN9, 20 nt	CCAAGCAGACCTATCTTAAC
Helicase primers	
HEL43, 43 nt	CTTGCATGCCTGCAGGTCGACTCTAGAGGATCCCCGGGTACCG
22-15A, 37 nt	TTTTTTTTTTTTTTTTTGTAGTGTGGTGTACATGCACTAC
22-15B, 37 nt	GTAGTGCATGTACACCACACTCTTTTTTTTTTTTTTT
HAIR49, 49 nt	GAGCAGGAGCAGGCCTCGAGACCTTTCCAAGTAAAACGACGGCCAG TGCCAGTGC
HAIR24, 24 nt	AGGTCTCGAGGCCTGCTCCTGCTC

Duplex DNA substrates containing flap were constructed by annealing appropriate FLAP oligonucleotide and upstream primer to 44-mer template oligonucleotide. FLAP00, FLAP01, FLAP30 and FLAP60 were used to construct the nicked duplex, 1 nt 5' flap duplex, 30 nt 5' flap duplex and 60 nt 5' flap duplex substrates,

1  
2  
3 respectively. Double-stranded flap and the bubble substrates were created by annealing together  
4 GEN1/GEN2/GEN3/GEN4 or GEN5/GEN6/GEN7, respectively. The M13mp18-based or oligonucleotide-based  
5 partial duplexes were prepared by annealing the HEL43 43-mer to circular M13mp18 ssDNA or 22-15A to 22-  
6 15B or HAIR49 to HAIR24, respectively.  
7  
8  
9  
10  
11  
12  
13  
14  
15  
16  
17  
18  
19  
20  
21  
22  
23  
24  
25  
26  
27  
28  
29  
30  
31  
32  
33  
34  
35  
36  
37  
38  
39  
40  
41  
42  
43  
44  
45  
46  
47  
48  
49  
50  
51  
52  
53  
54  
55  
56  
57  
58  
59  
60

For Peer Review

**FIGURE LEGENDS**

**Figure 1.** Enzymatic activities of purified RECQL5 $\beta$  and FEN1. **(A,B)** 4-12% Bis-Tris PAGE showing purified RECQL5 $\beta$  protein and purified FEN1 protein, respectively. **(C)** DNA helicase assay of RECQL5 $\beta$  using a 44 nt M13mp18-based duplex radiolabeled at 3'-end. Reactions were carried out at 37°C for 30 min and contained 0.5 nM DNA, varying concentrations of RECQL5 $\beta$  (as indicated) and 2 mM ATP. The reaction products were analyzed by 10% nondenaturing PAGE. Radiolabeled species were visualized by autoradiography. The last lane contains heat-denatured substrate. **(D)** Flap endonuclease activity of FEN1. Reactions were carried out at 37°C for 15 min and contained 1 nM 43 nt duplex with 1 nt 5' flap radiolabeled at 5'-end, and varying concentrations of FEN1 (as indicated). The reaction products were analyzed by 20% denaturing PAGE.

**Figure 2.** RECQL5 $\beta$  stimulates FEN1 cleavage of 1 nt 5' flap DNA. Reactions (10  $\mu$ l) containing 1 nM 1 nt 5' flap DNA substrate, 5 nM FEN1 and the indicated amounts of RECQL5 $\beta$ , or 20 nM BSA, were incubated at 37°C for 15 min under conditions described in the Materials and Methods. The presence of 2 mM ATP in reaction mixtures is indicated (lanes 10-18). **(A)** A phosphorimage of a typical gel. **(B)** Percent incision from the data shown in **(A)**, data points are the mean of three independent experiments with SDs indicated by error bars.

**Figure 3.** Kinetics of FEN1 cleavage of the 1 nt 5' flap substrate in the presence or absence of RECQL5 $\beta$ . Reactions (70  $\mu$ l) containing 1 nM 1 nt 5'-flap DNA substrate and 5 nM FEN1 were incubated at 37°C, and aliquots were removed at 1, 3, 6, 9, 12, and 15 min. The reactions conducted in the presence of RECQL5 $\beta$  contained 5 nM RECQL5 $\beta$ . **(A)** Phosphorimage of a typical gel from a kinetic experiment. Increasing times of incubation (1-15 min) for the FEN1 cleavage reactions conducted in the absence of RECQL5 $\beta$  (lanes 3-8) or the presence of RECQL5 $\beta$  (lanes 9-14) are indicated. Fifteen minutes incubations

1  
2  
3 conducted in the absence of RECQL5 $\beta$  + FEN1 or FEN1 are shown in lanes 1 and 2,  
4  
5 respectively. (B) Percent incision from the data shown in (A), data points are the mean of  
6  
7 three independent experiments with SDs indicated by error bars. Open circles, FEN1 alone;  
8  
9 filled circles, FEN1 + RECQL5 $\beta$ .  
10  
11

12 **Figure 4.** RECQL5 $\beta$  stimulates FEN1 cleavage of duplex DNA containing 30 nt 5' flap.  
13  
14 Reactions (10  $\mu$ l) containing 1 nM 30 nt 5' flap substrate, 0.1 nM FEN1 and the indicated  
15  
16 amounts of RECQL5 $\beta$ , or 0.8 nM BSA, were incubated at 37°C for 15 min. The presence of 2  
17  
18 mM ATP in reaction mixtures is indicated (lanes 10-18). (A) A phosphorimage of a typical  
19  
20 gel. (B) Percent incision from the data shown in (A), data points are the mean of three  
21  
22 independent experiments with SDs indicated by error bars.  
23  
24  
25  
26

27 **Figure 5.** RECQL5 $\beta$  stimulates FEN1 cleavage of duplex DNA containing a nick.  
28  
29 Reactions (10  $\mu$ l) containing 1 nM nicked duplex substrate, 1 nM FEN1 and the indicated  
30  
31 amounts of RECQL5 $\beta$ , or 2 nM BSA, were incubated at 37°C for 15 min. The presence of 2  
32  
33 mM ATP in reaction mixtures is indicated (lanes 10-18). (A) A phosphorimage of a typical  
34  
35 gel. (B) Percent incision from the data shown in (A), data points are the mean of three  
36  
37 independent experiments with SDs indicated by error bars.  
38  
39  
40

41 **Figure 6.** RECQL5 $\beta$  effects on FEN1's GEN activity on double-stranded flap substrates.  
42  
43 Reactions (10  $\mu$ l) containing 1 nM 3' double-stranded flap substrates (A, Leading) or 5'  
44  
45 double-stranded flap substrate (B, Lagging), the indicated amounts of FEN1 and RECQL5 $\beta$ ,  
46  
47 or BSA, were incubated at 37°C for 15 min. The presence of 2 mM ATP in reaction mixtures  
48  
49 is indicated (lanes 10-18). (C) Percent incision from the data shown in (B), data points are the  
50  
51 mean of three independent experiments with SDs indicated by error bars.  
52  
53  
54

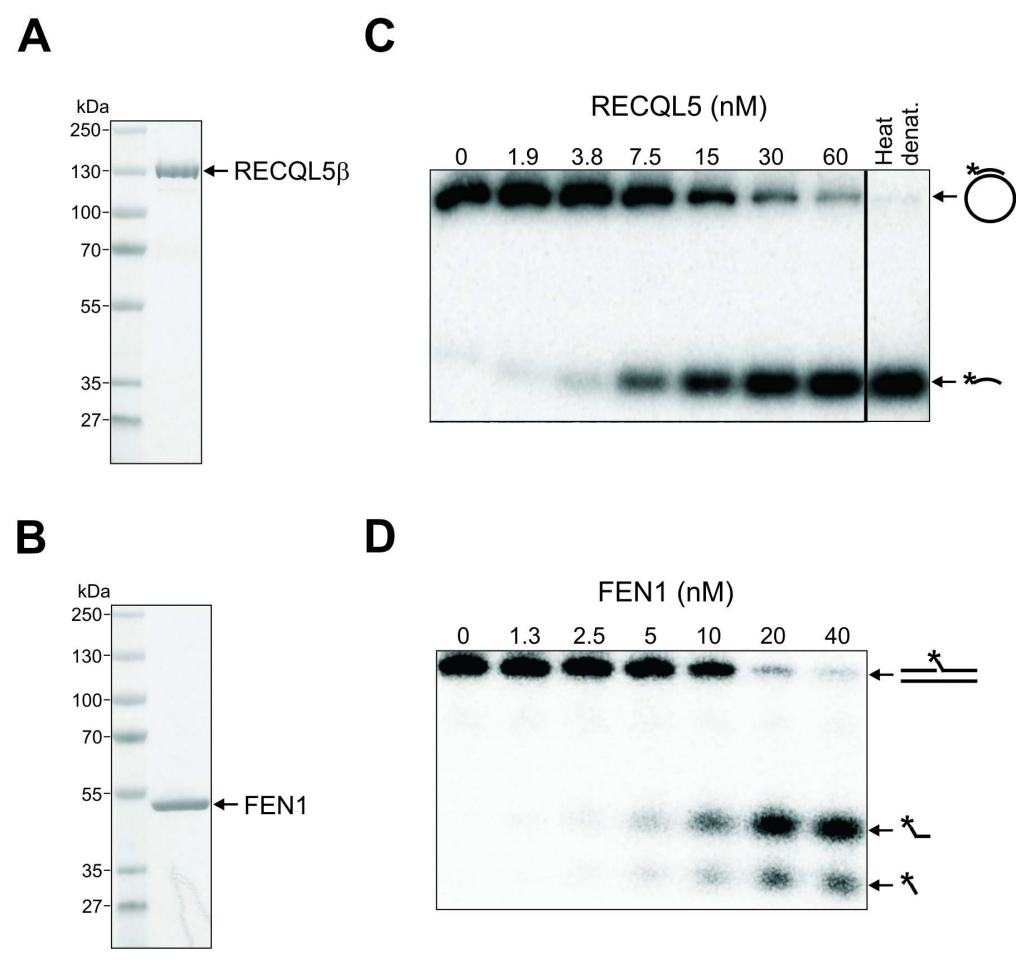
55 **Figure 7.** RECQL5 $\beta$  and FEN1 interact directly. Binding of FEN1 from 293T extracts (A)  
56  
57 or purified FEN1 (B) to chitin beads coated with Chitin Binding Domain (CBD) or  
58  
59 RECQL5 $\beta$ -CBD. (C) Diagram of GST-FEN1 fragments used to define which domain of  
60

1  
2  
3 FEN1 RECQL5 $\beta$  interacts with. (D) Binding of GST fused to various C-terminal fragments of  
4  
5  
6 FEN1 to chitin beads coated with RECQL5 $\beta$ -CBD.  
7

8 **Figure 8.** Co-localization of endogenous FEN1 and overproduced 3xFlag-RECQL5 $\beta$ -Myc  
9  
10 in HeLa cells treated with H<sub>2</sub>O<sub>2</sub>. Twenty-four hours after transfection of plasmid encoding  
11  
12 3XFlag-RECQL5 $\beta$ -Myc, non-synchronized cells were incubated in the presence or absence of  
13  
14 100  $\mu$ M H<sub>2</sub>O<sub>2</sub> for 30 min and then fixed. Cells were triply stained for FEN1 (red), 3xFlag-  
15  
16 RECQL5 $\beta$ -Myc (green) and DNA (blue) as described in the Materials and Methods, and  
17  
18 analyzed by confocal microscopy. Yellow color in superimposed images (merge) indicates  
19  
20 co-localization of FEN1 and 3xFlag-RECQL5 $\beta$ -Myc. White bar represent 50  $\mu$ m.  
21  
22  
23  
24  
25  
26  
27  
28  
29  
30  
31  
32  
33  
34  
35  
36  
37  
38  
39  
40  
41  
42  
43  
44  
45  
46  
47  
48  
49  
50  
51  
52  
53  
54  
55  
56  
57  
58  
59  
60

1  
2  
3  
4  
5  
6  
7  
8  
9  
10  
11  
12  
13  
14  
15  
16  
17  
18  
19  
20  
21  
22  
23  
24  
25  
26  
27  
28  
29  
30  
31  
32  
33  
34  
35  
36  
37  
38  
39  
40  
41  
42  
43  
44  
45  
46  
47  
48  
49  
50  
51  
52  
53  
54  
55  
56  
57  
58  
59  
60

# Figure 1

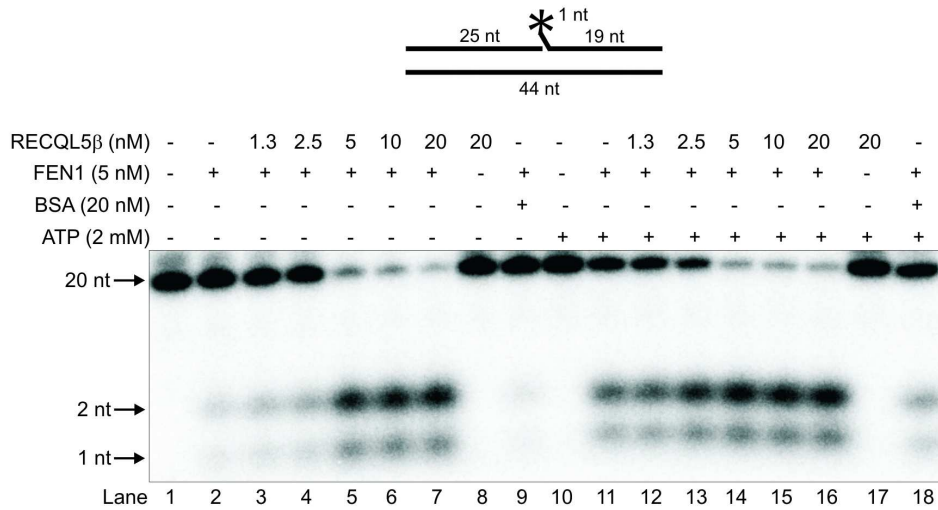


152x152mm (300 x 300 DPI)

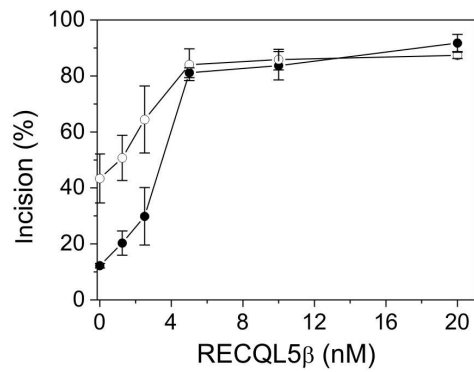


Figure 2

A



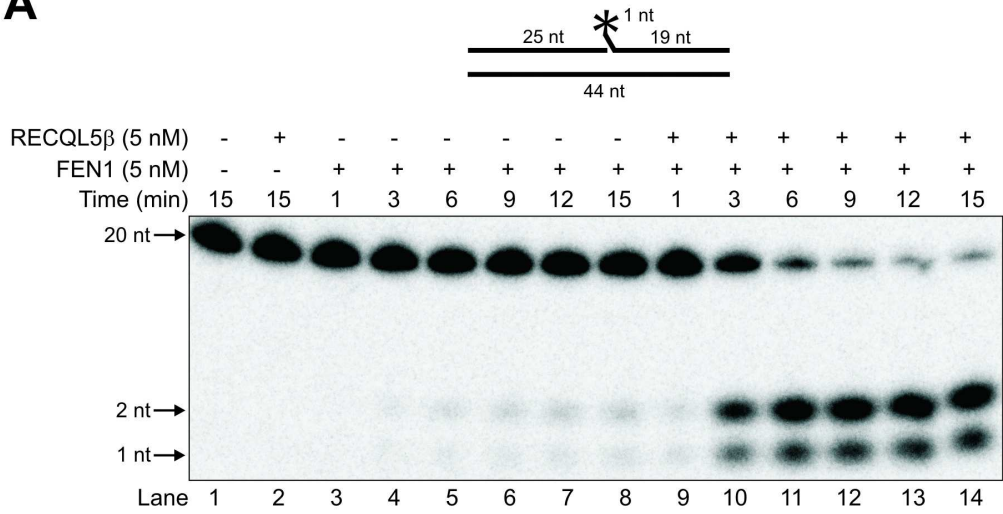
B



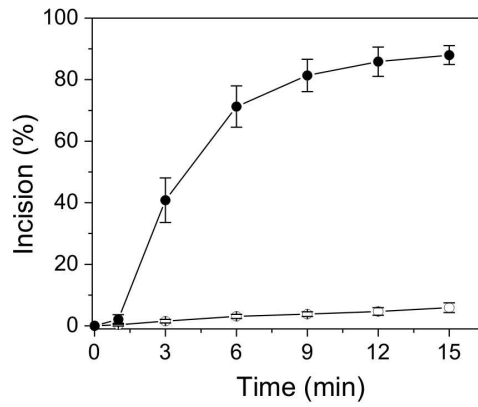
155x167mm (300 x 300 DPI)

Figure 3

**A**



**B**



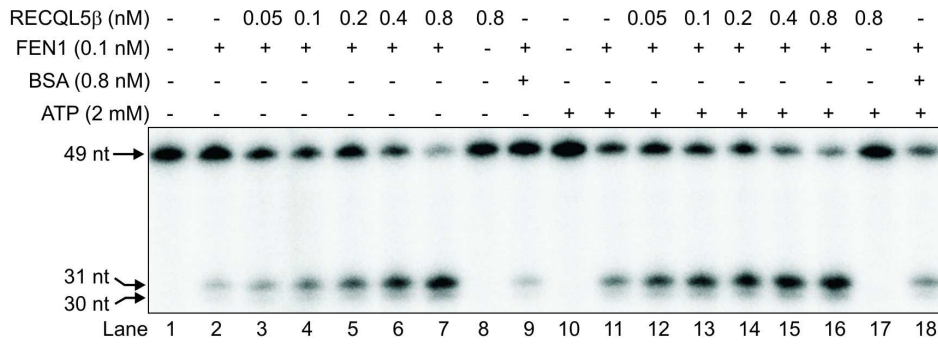
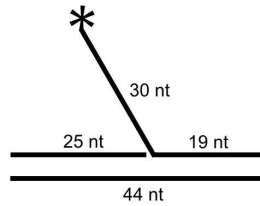
152x172mm (300 x 300 DPI)

1  
2  
3  
4  
5  
6  
7  
8  
9  
10  
11  
12  
13  
14  
15  
16  
17  
18  
19  
20  
21  
22  
23  
24  
25  
26  
27  
28  
29  
30  
31  
32  
33  
34  
35  
36  
37  
38  
39  
40  
41  
42  
43  
44  
45  
46  
47  
48  
49  
50  
51  
52  
53  
54  
55  
56  
57  
58  
59  
60

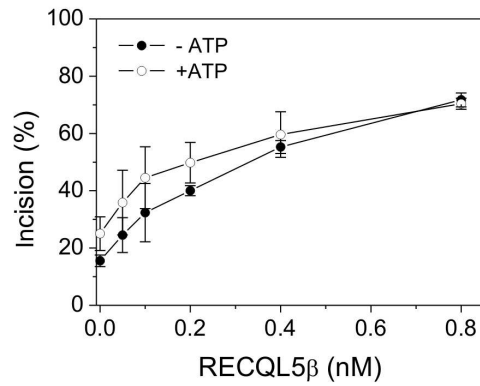


Figure 4

A



B

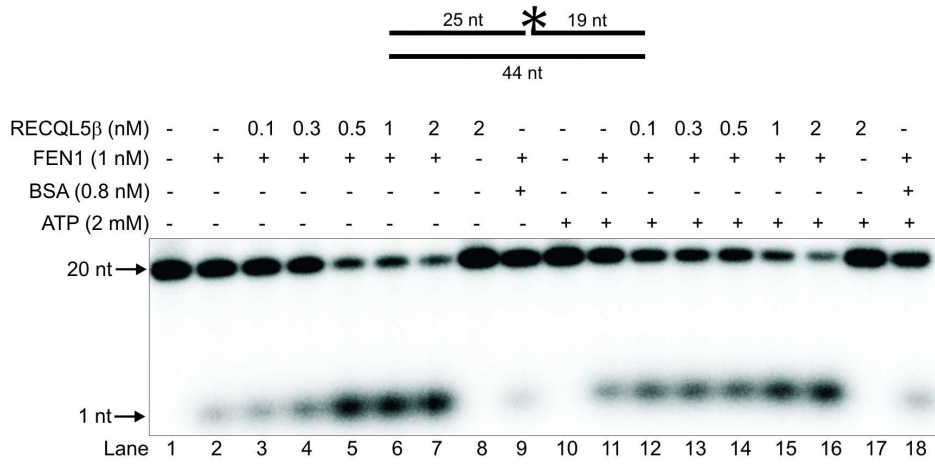


155x173mm (300 x 300 DPI)

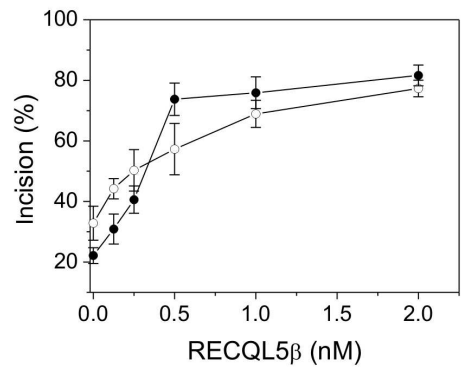
1  
2  
3  
4  
5  
6  
7  
8  
9  
10  
11  
12  
13  
14  
15  
16  
17  
18  
19  
20  
21  
22  
23  
24  
25  
26  
27  
28  
29  
30  
31  
32  
33  
34  
35  
36  
37  
38  
39  
40  
41  
42  
43  
44  
45  
46  
47  
48  
49  
50  
51  
52  
53  
54  
55  
56  
57  
58  
59  
60

Figure 5

**A**



**B**



156x166mm (300 x 300 DPI)

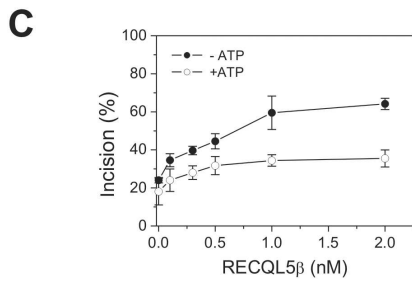
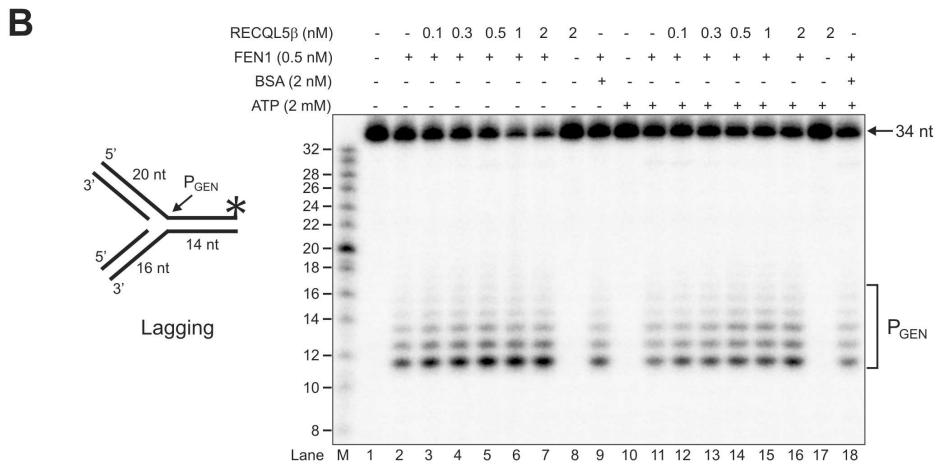
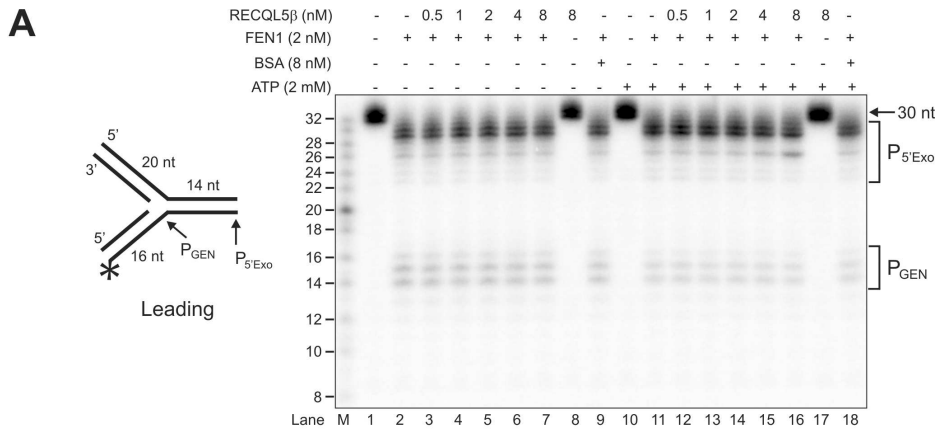


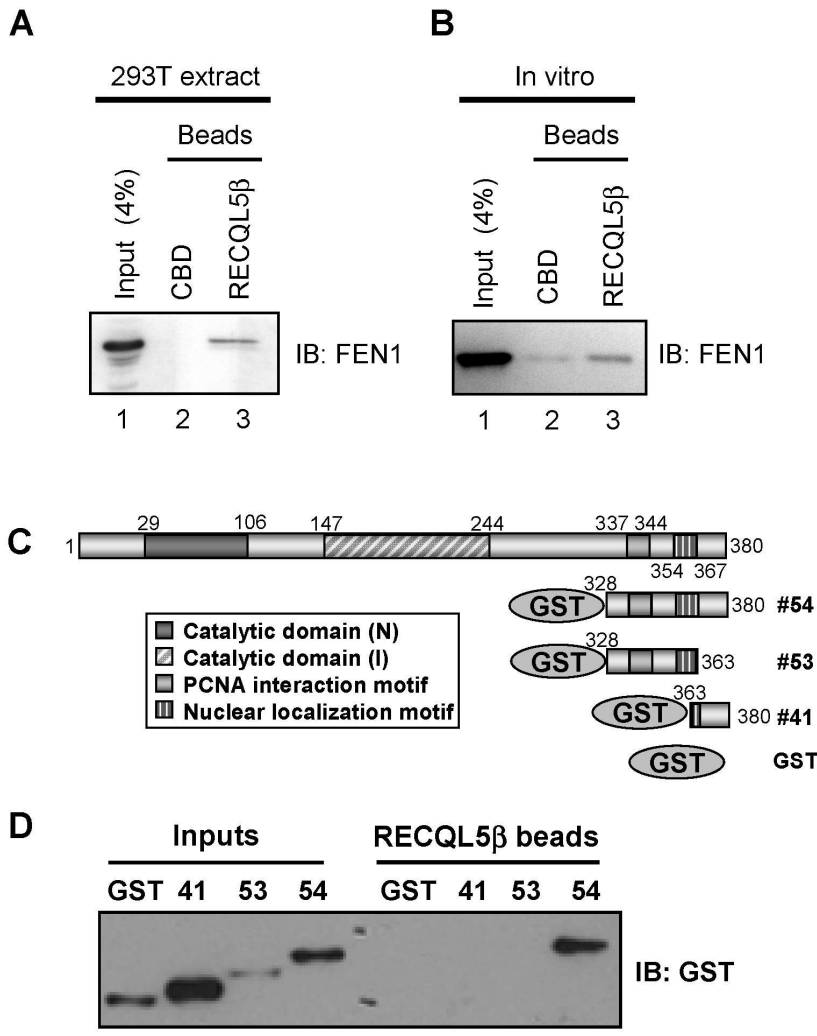
Figure 6

174x224mm (300 x 300 DPI)

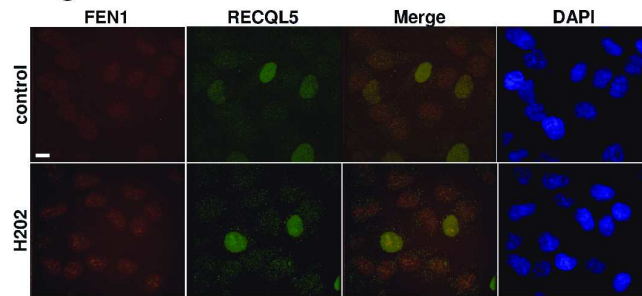
1  
2  
3  
4  
5  
6  
7  
8  
9  
10  
11  
12  
13  
14  
15  
16  
17  
18  
19  
20  
21  
22  
23  
24  
25  
26  
27  
28  
29  
30  
31  
32  
33  
34  
35  
36  
37  
38  
39  
40  
41  
42  
43  
44  
45  
46  
47  
48  
49  
50  
51  
52  
53  
54  
55  
56  
57  
58  
59  
60

1  
2  
3  
4  
5  
6  
7  
8  
9  
10  
11  
12  
13  
14  
15  
16  
17  
18  
19  
20  
21  
22  
23  
24  
25  
26  
27  
28  
29  
30  
31  
32  
33  
34  
35  
36  
37  
38  
39  
40  
41  
42  
43  
44  
45  
46  
47  
48  
49  
50  
51  
52  
53  
54  
55  
56  
57  
58  
59  
60

# Figure 7



149x188mm (300 x 300 DPI)

**Figure 8**

279x215mm (300 x 300 DPI)

Review